



WHITMAN COLLEGE

President's Sustainability
Advisory Committee

Sept 18, 2017

Agenda

- Committee Introductions
- Strategic Planning
- Sustainability Office Update
- ASWC Sustainability Status Update
- Sierra Club and Sustainability Rankings
- 2017-2018 Sustainability Priorities



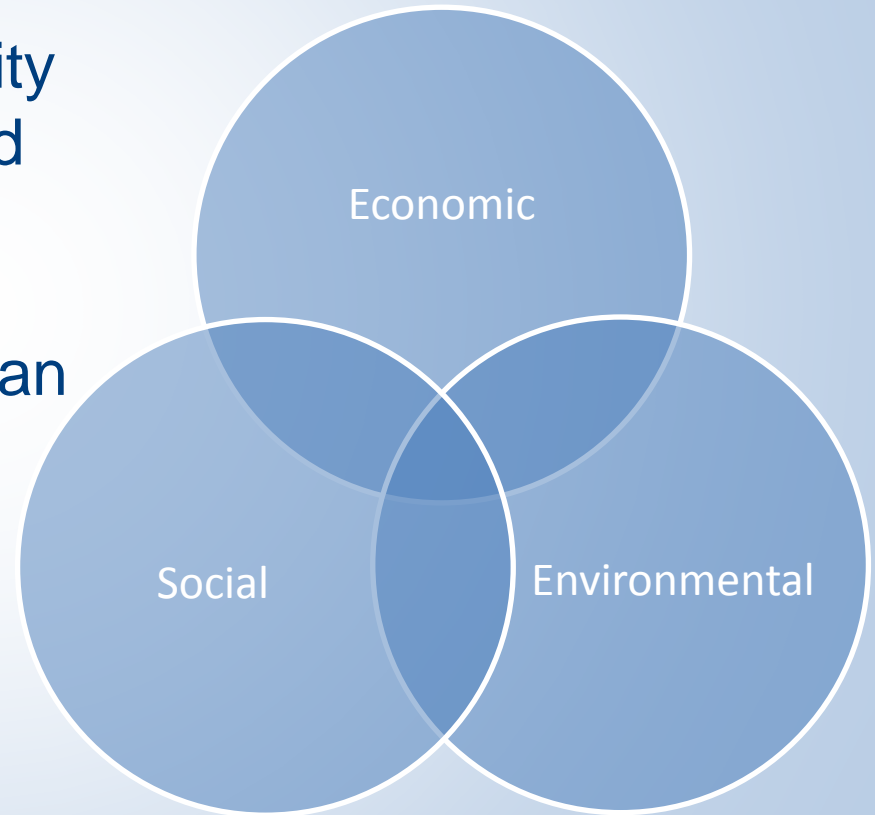
Strategic Planning: Sustainability

- Innovating the Curriculum:
 - *“In the face of environmental upheavals, technological change, and debates over the meaning of community in a globalized world, we reaffirm our commitment to the liberal arts and dedicate ourselves to shaping a dynamic curriculum”*
- Celebrating our Location:
 - “In turn, Whitman must further strengthen our commitment to and readiness for this collaboration: building sustainable community relationships, creating a culture that celebrates our location, emphasizing the strengths of our location as we communicate with prospective students and recruit new faculty and staff and **protecting our natural environment**”
- New Mission Statement & Area committees



Sustainability

- Increasing Access & Affordability
- Enhancing Diversity, equity and Inclusion
- Innovating the Curriculum
- Connecting to Life After Whitman
- Celebrating our Location



Starting to incorporate Resiliency



Office of Sustainability Update

- **Lighting Retrofits:**

Baker Faculty Center Retrofit- 1.5 year payback

Incandescent to LED and CFL to LED

Recycling Center:

Incandescent/90w Halogen to LED 1 year payback

Sheehan Gallery: Retrofit: 1/3 energy reduction.

Jewett Hall: Exterior Metal Halide to LED (TBD)

Outdoor Campus Standard: 175w to 60w LED test of retrofit kit. (114 units)

- **Potential Lighting Retrofits:**

Reid Campus Center: Pendulum lights and bookstore spots.

Lighting Retrofits:

Jewett Hall: Lighting retrofit of all common areas. \$40,675 ~ 7 year payback before incentives. Possible SLRF Fund Project.



Building Sub Metering

- **Lyman Hall Electrical, Natural Gas, Condensate, and Screen/System: \$35,076**
- **Lyman Hall Steam Meter: \$17,251**
- **Lyman Total: \$56,625 with 10% contingency included.**

Due to cost the project was placed on hold.

Carbon Offsets for FY2018

Renewable Energy Credits: \$34,999.05

- 17,400 kWh of American Wind.
 - 100% electricity offset.
 - Green-E Certified
- 1,251 mtCO₂e Choice Carbon Offset.
 - Roughly 30% of Natural Gas
 - Verified Carbon Standard, Climate Action Reserve

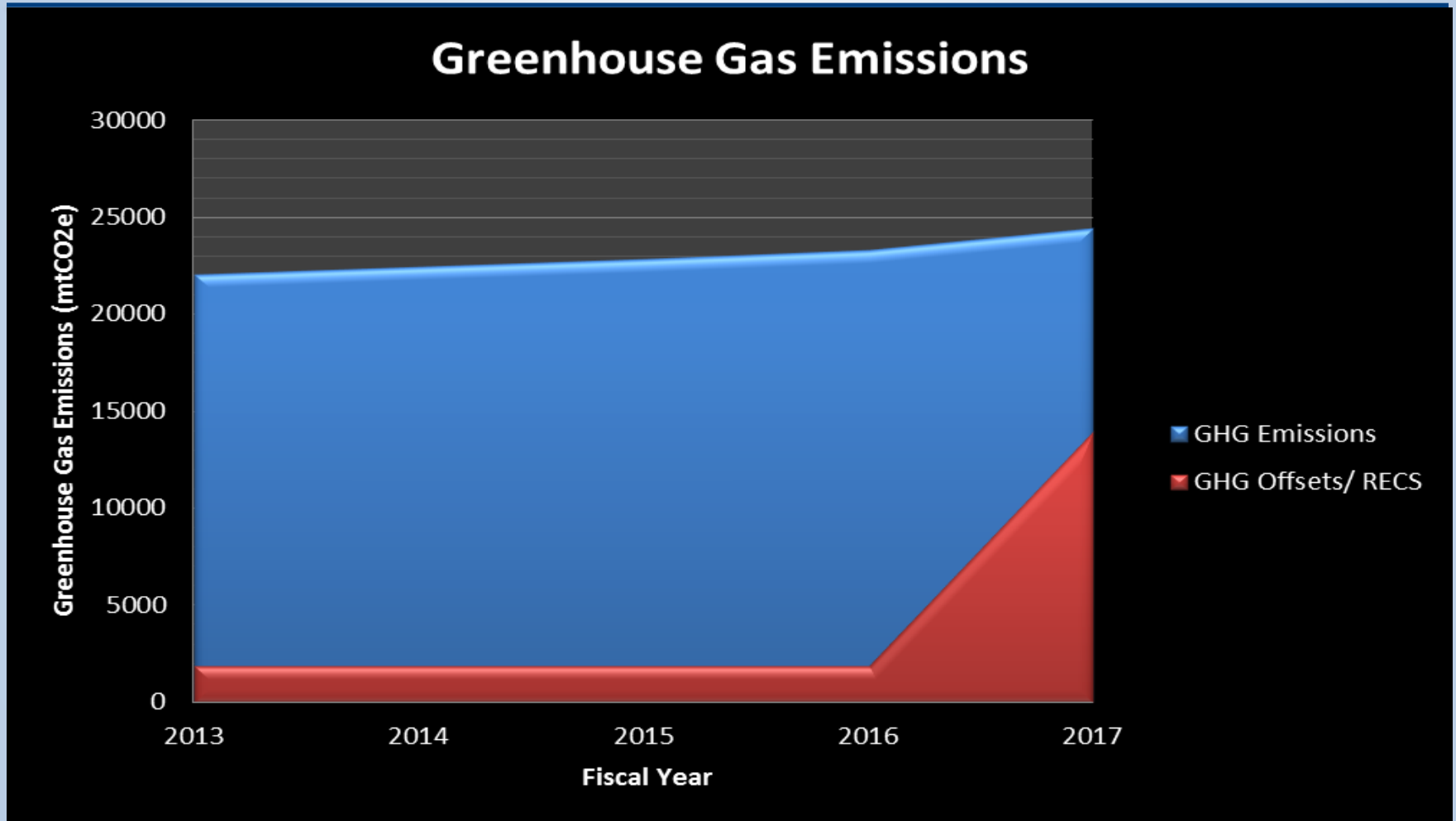
*Starting to Price Options for FY2019 including Power Purchase Agreement located near college. Would support energy development Inland Northwest.



| | | FY 17 eCO ₂ | eCO ₂ |
|----------------|---------------------------------|------------------------|------------------|
| | | Metric Tonnes | Metric Tonnes |
| Scope 1 | Co-gen Electricity | - | - |
| | Co-gen Steam | - | - |
| | On-Campus Stationary (Heating) | 3,303.7 | 2,815.9 |
| | Fleet Transportation | 134.5 | 138.7 |
| | Refrigerants & Chemicals | 75.2 | 277.4 |
| | Agriculture | 328.5 | 388.2 |
| Scope 2 | Purchased Electricity | 11,183.0 | 11,131.6 |
| | Purchased Steam / Chilled Water | - | - |
| Scope 3 | Faculty / Staff Commuting | 39.8 | 40.3 |
| | Student Commuting | 4.1 | 4.0 |
| | Directly Financed Air Travel | 437.8 | 432.7 |
| | Other Directly Financed Travel | 31.3 | 31.0 |
| | Study Abroad Air Travel | - | - |
| | Student Travel to/from Home | 8,057.4 | 7,893.6 |
| | Solid Waste | 39.4 | 44.6 |
| | Wastewater | 0.0 | 0.0 |
| | Paper | 12.9 | 12.9 |
| | Scope 2 T&D Losses | 762.6 | 49.7 |
| Offsets | Additional | - | - |
| | Non-Additional | (13,936.3) | (1,961.1) |
| Totals | Scope 1 | 3,841.8 | 3,620.2 |
| | Scope 2 | 11,183.0 | 11,131.6 |
| | Scope 3 | 9,385.3 | 8,508.8 |
| | All Scopes | 24,410.1 | 23,260.7 |
| | All Offsets | (13,936.3) | (1,961.1) |
| | | 10,473.8 | 21,299.5 |

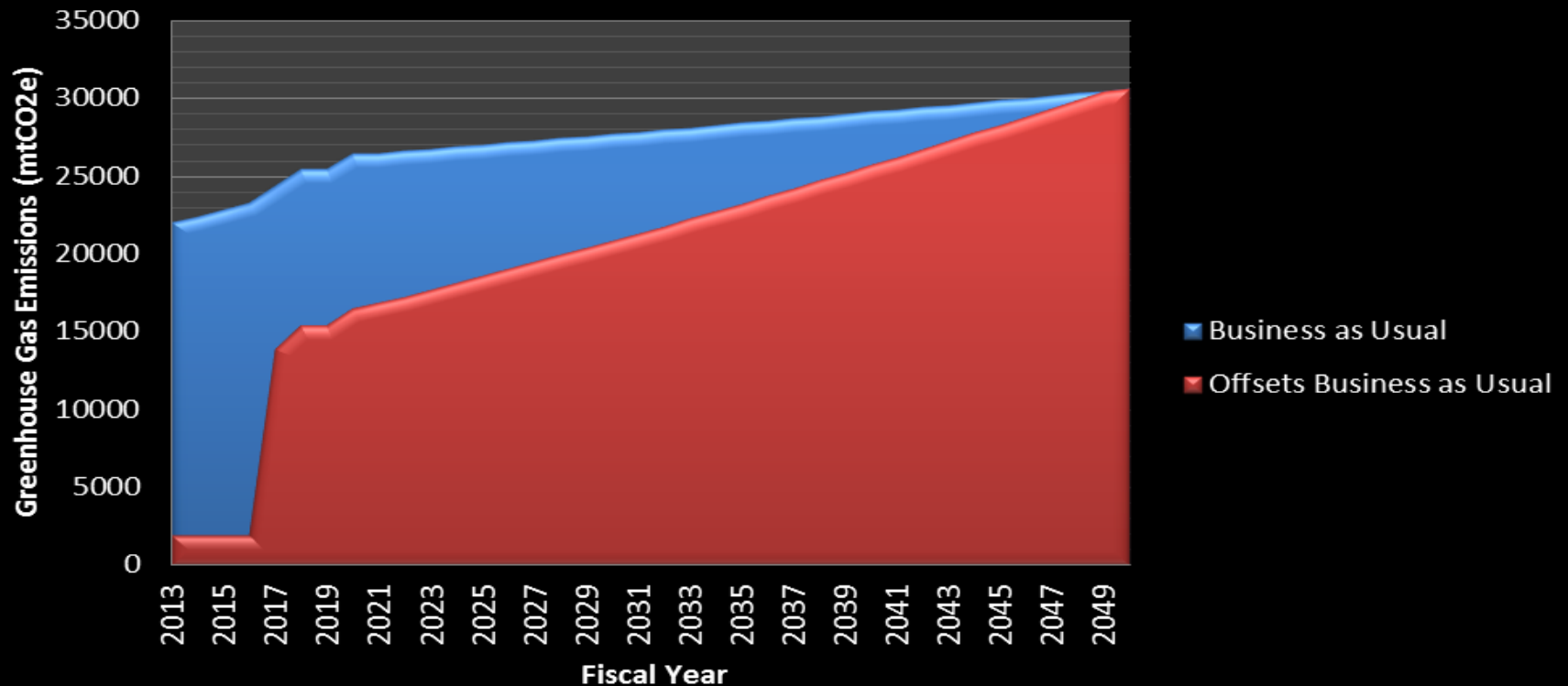


Current Campus Emissions



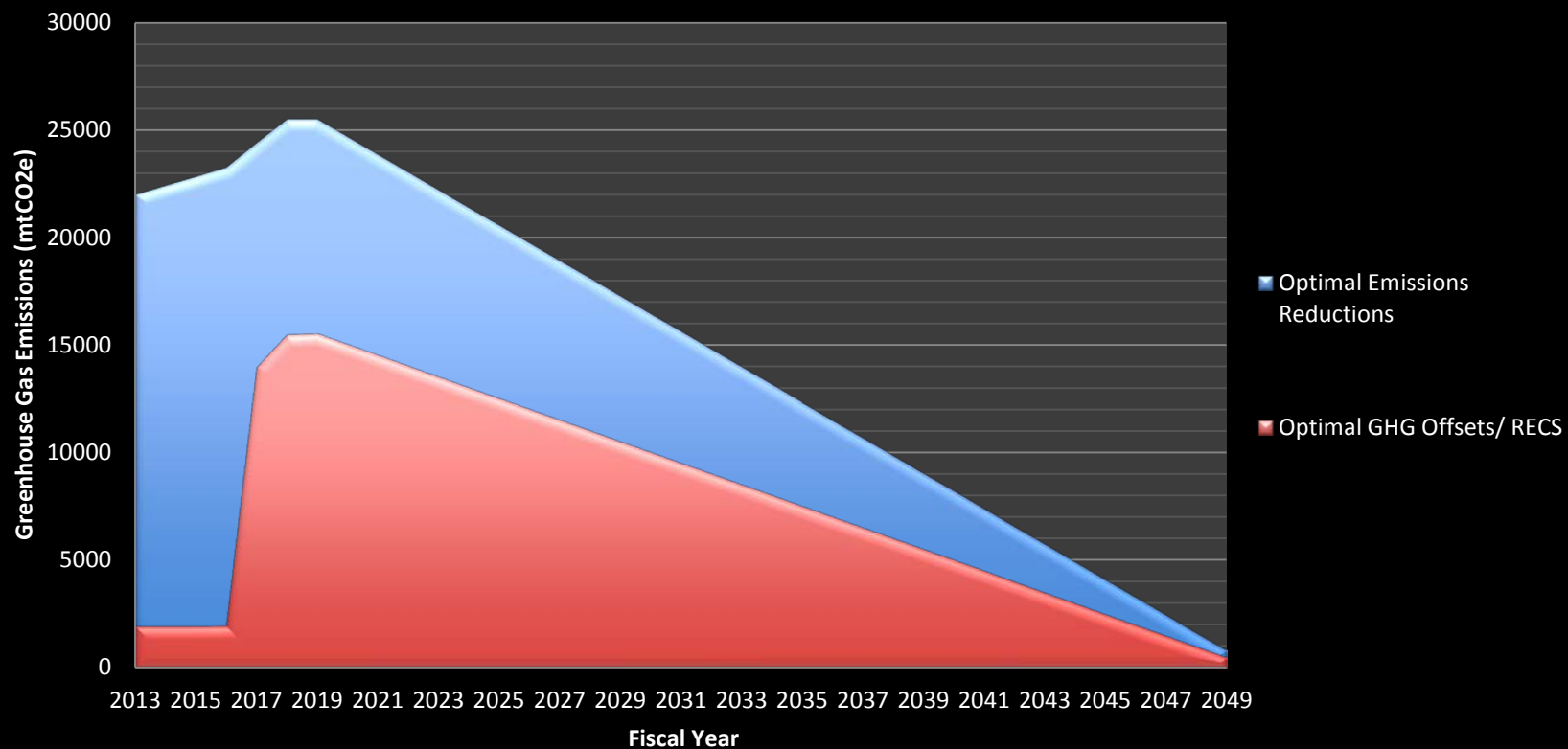
Emissions Forecasting

Business as Usual Greenhouse Gas Emissions Reductions

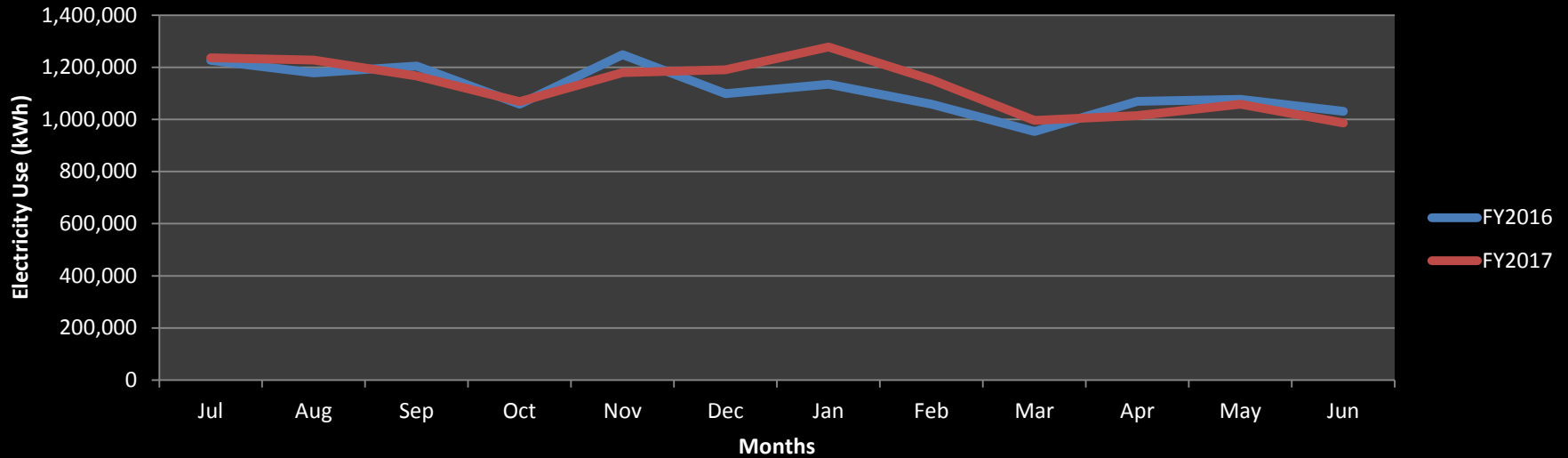


Optimal Climate Action Plan Scenario

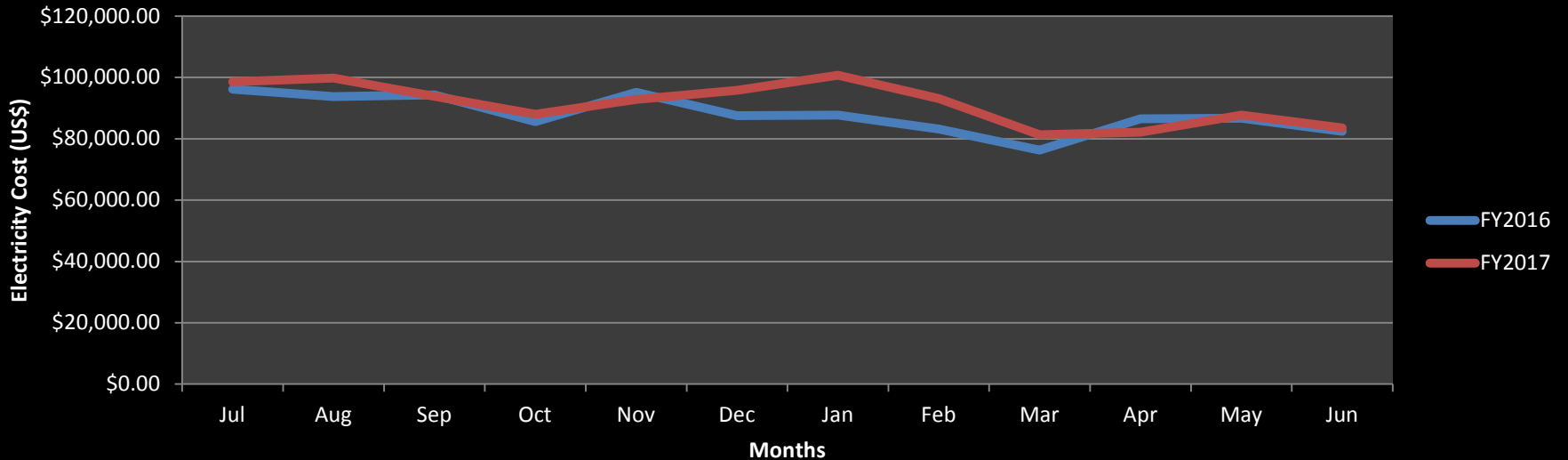
Optimal Greenhouse Gas Emissions Reductions



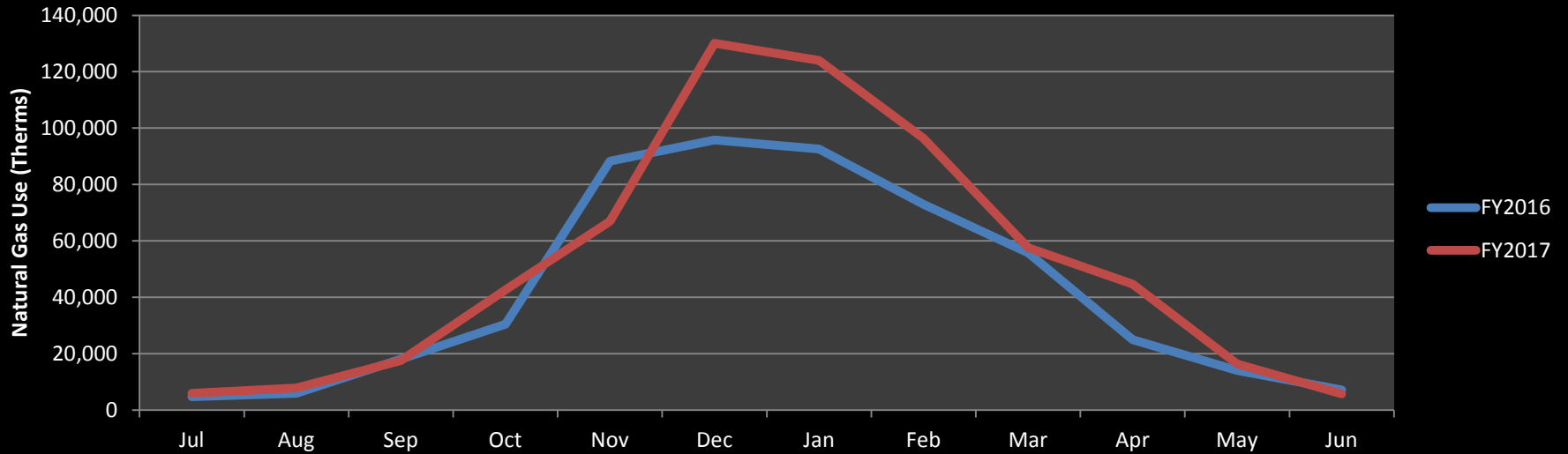
Whitman College Electricity Use (kWh)



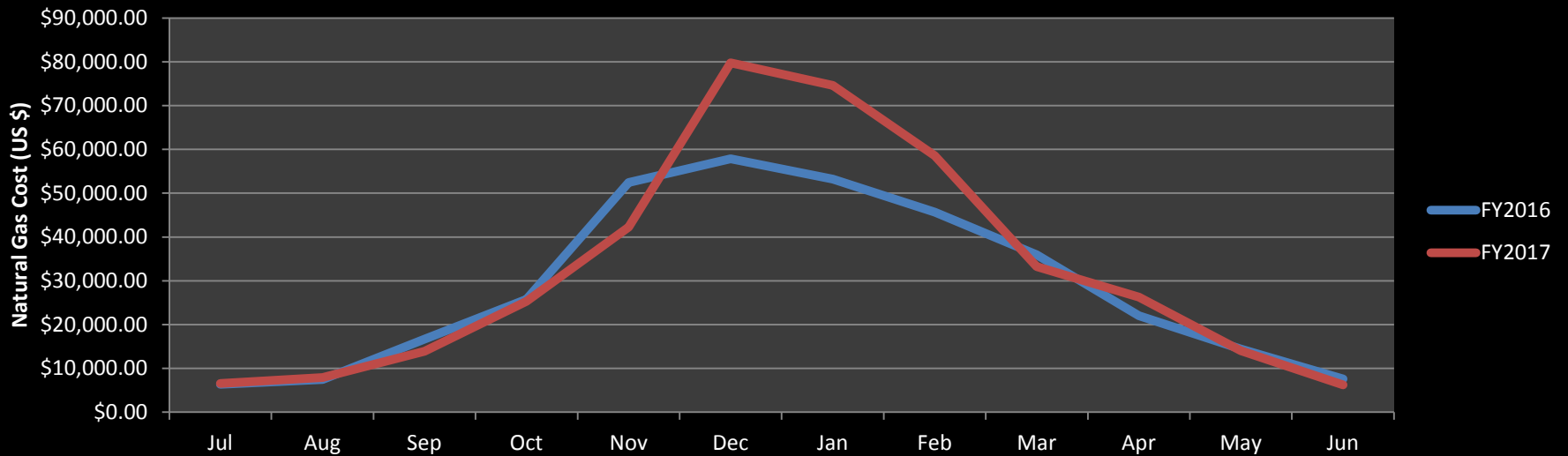
Whitman College Electricity Cost



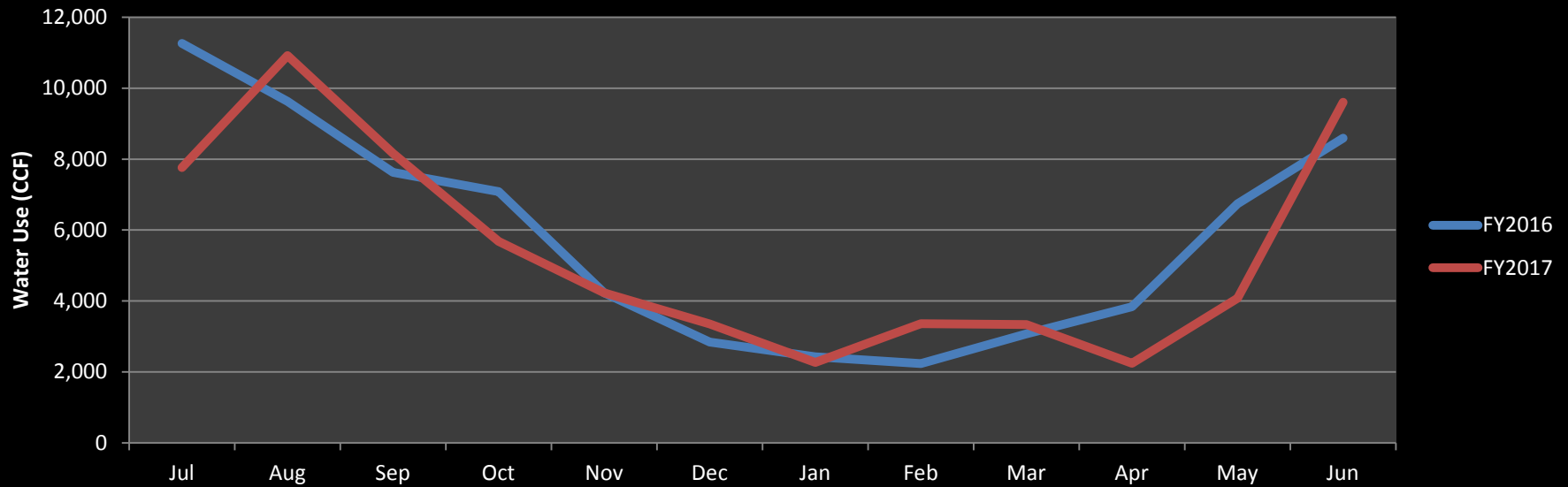
Whitman College Natural Gas Use



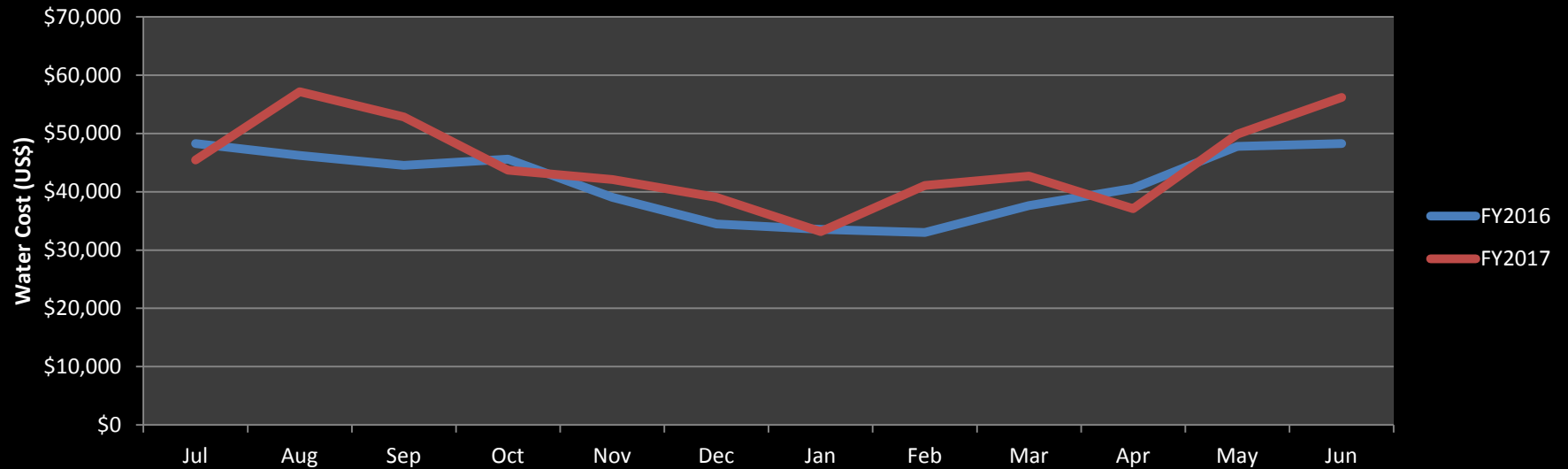
Whitman College Natural Gas Cost



Whitman College Municipal Water Use (CCF)



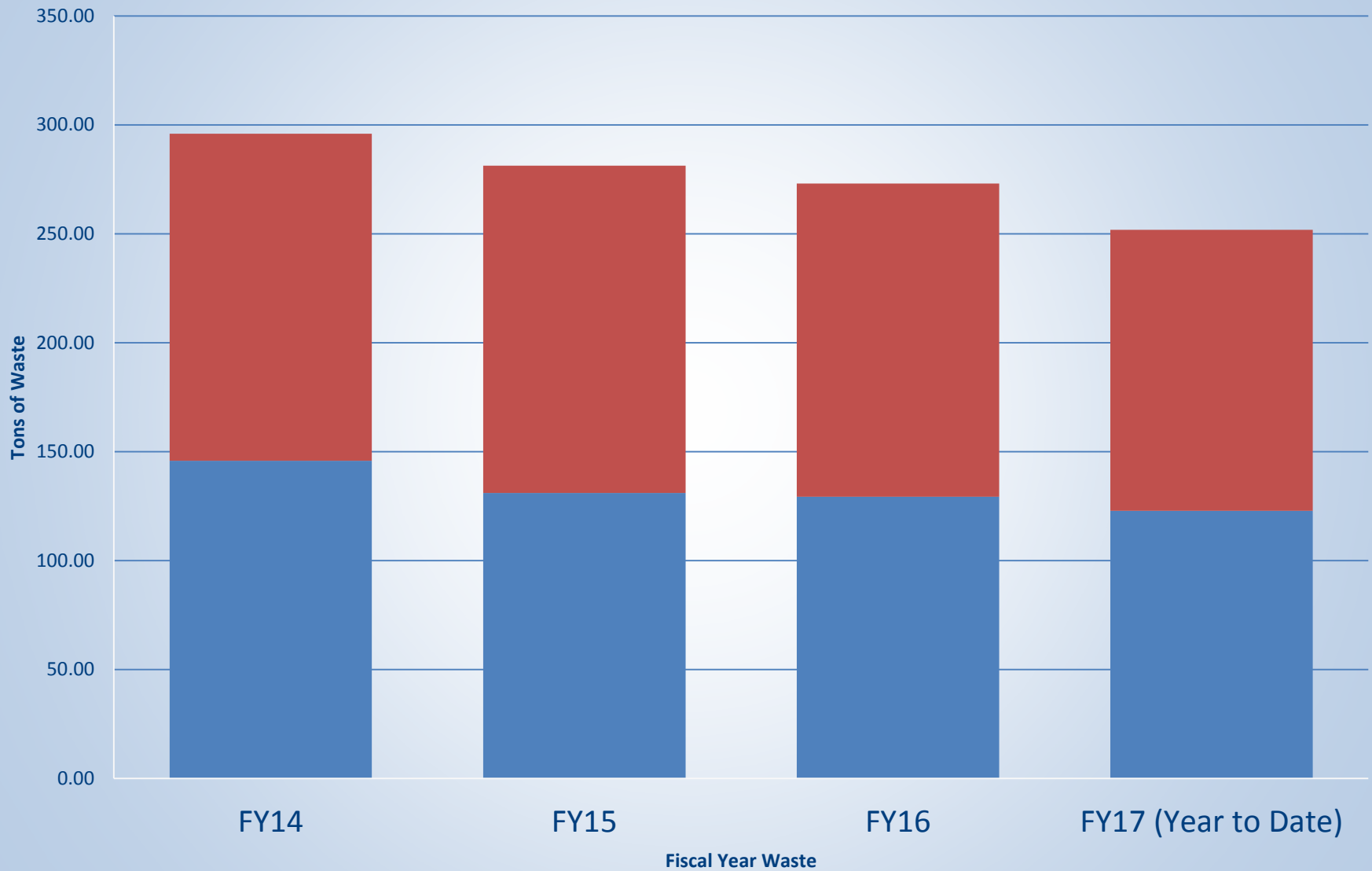
Whitman College Municipal Water Cost



Waste Diversion Trends



Annual Campus Waste Overview



Waste Stream FY17

■ Landfill

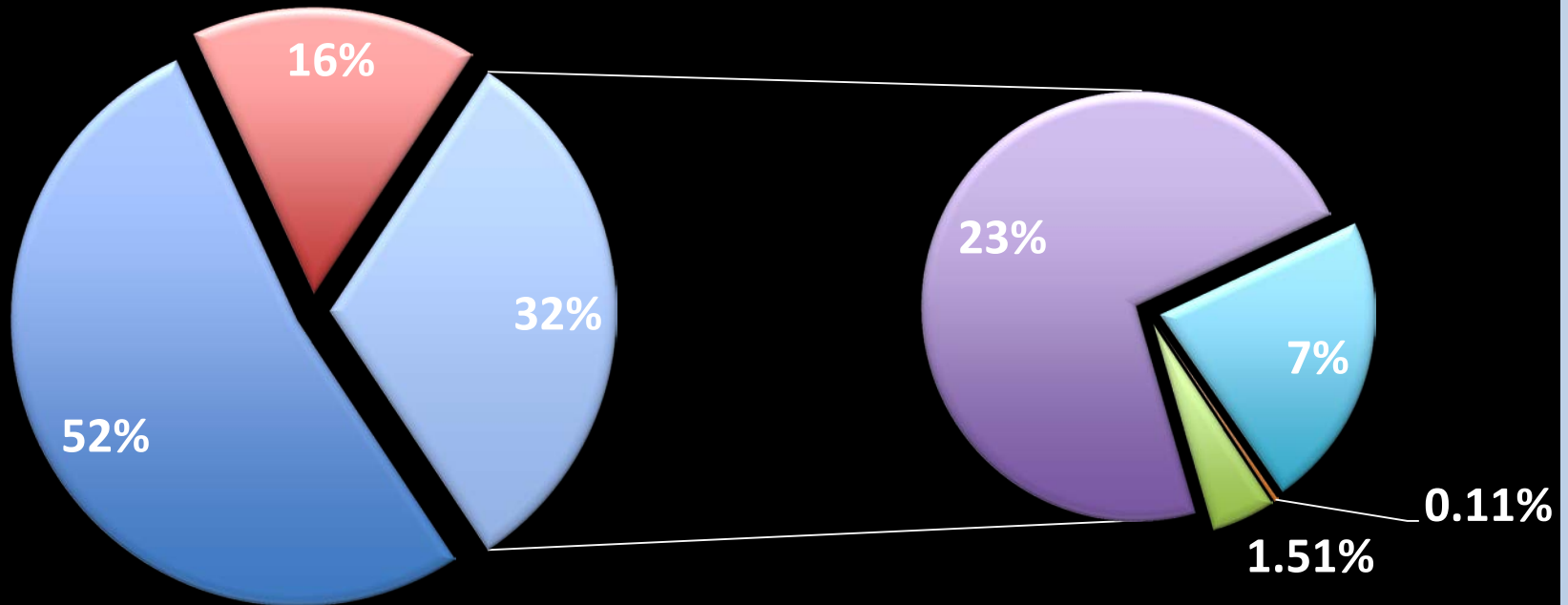
■ Yardwaste/ Compost

■ Plastics & Tin

■ Cardboard

■ Paper

■ Aluminum



Living at Whitman Initiative

- Residence Hall projected to be LEED Platinum
- Dining Hall projected to be LEED Gold
- Low flow water fixtures added, 50% construction waste diversion added, LED Lighting, 116 kW of Solar Panels (currently on campus 20kW) added, regionally sourced materials, and Electronic Vehicle Charging Station (pending).
- Food Pulping: Not Included in Dining Hall.



Set Point Status

- We have seen upticks in exemption requests when exterior air temperature is $<30^{\circ}\text{F}$ and $95^{\circ}\text{F}<$.
- Close to 70% of the campus is still maintaining within the set point policy.
- There have been 23 exemptions to date. Common space exemptions require an authorization by the Division Head, or Department Head. This change was made due to issues with the original policy and clashing personal preference.
- 3 locations have been exempted through this method. WCTS, Baker Center, and One Classroom.
- Several temporary exemptions have been authorized.

Summer Recycling Retrofit



ASWC Update

- Food Week: Potential Speaker
- ASWC Zero Waste Plan



National Sustainability Ranking (Sierra Club Cool Schools)

- Whitman College was rated 200 out of 227.
- The institution did not make the top 100 list.
- Heavily Linked to our Association for the Advancement of Sustainability in Higher Education Rating.
- New Divestment points impacted a number of Institutions. (+/- 70 ranking positions)
- Princeton Review ranking likely to be similar



Priorities 2017-2018

- What priorities would the committee like to see in 2017-2018?
- Climate Action Plan:
 - Standardize building efficiency measures
 - LEED Silver rated equivalency on new construction major renovation.
 - Air Travel- Travel Tracking data holes in emissions policy
 - LED Lighting Standard moving forward (Maintenance, Construction, Janitorial, Retrofits)
 - Solid Waste Plan: ASWC Plan- E-waste issues
 - Sub metering
 - Revisit Printing
 - Finalize Idling Policy (Not yet adopted)
 - 100% natural gas offsets by 2020
 - Sustainable Endowment Fund: Use savings to fund new projects and maintain systems.

