

WHITMAN COLLEGE FACTBOOK

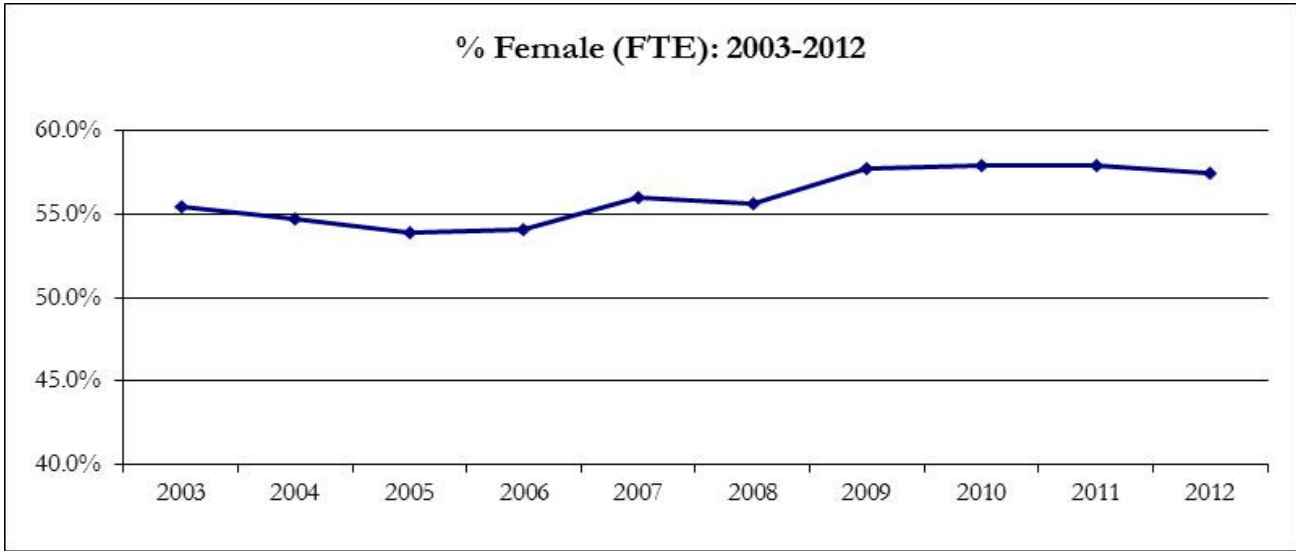
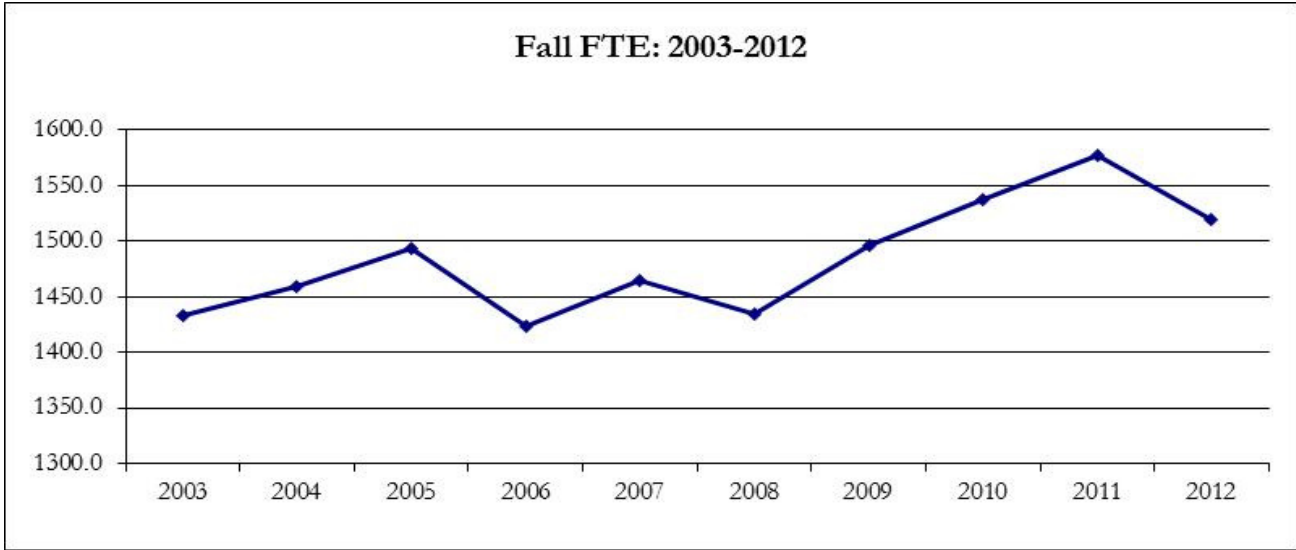
Academic Year 2012-13

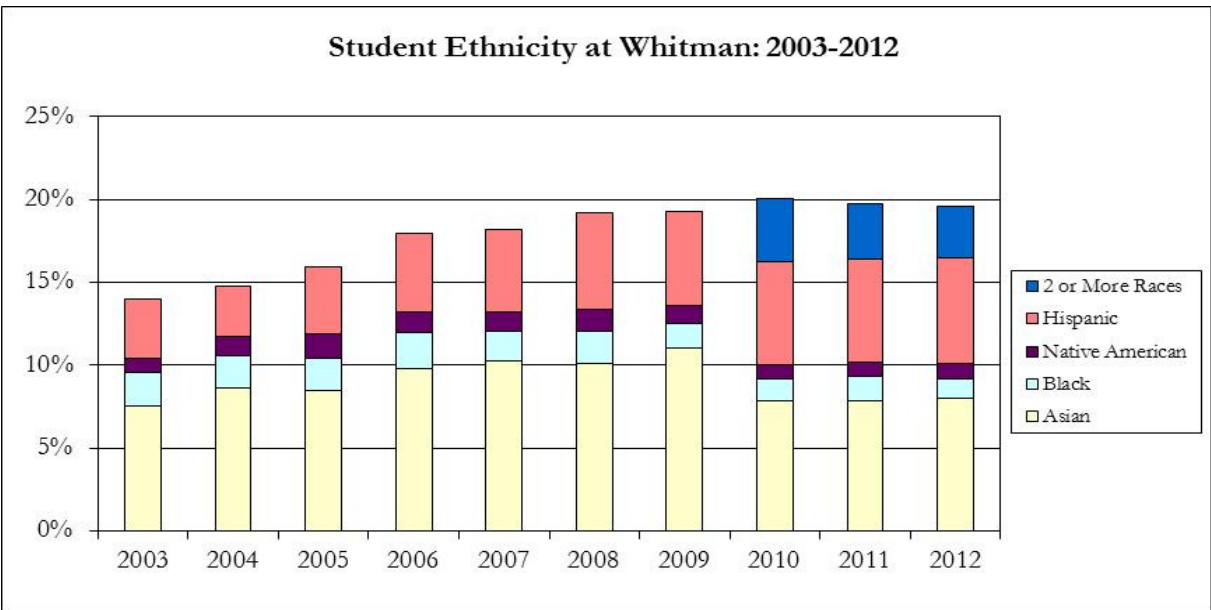
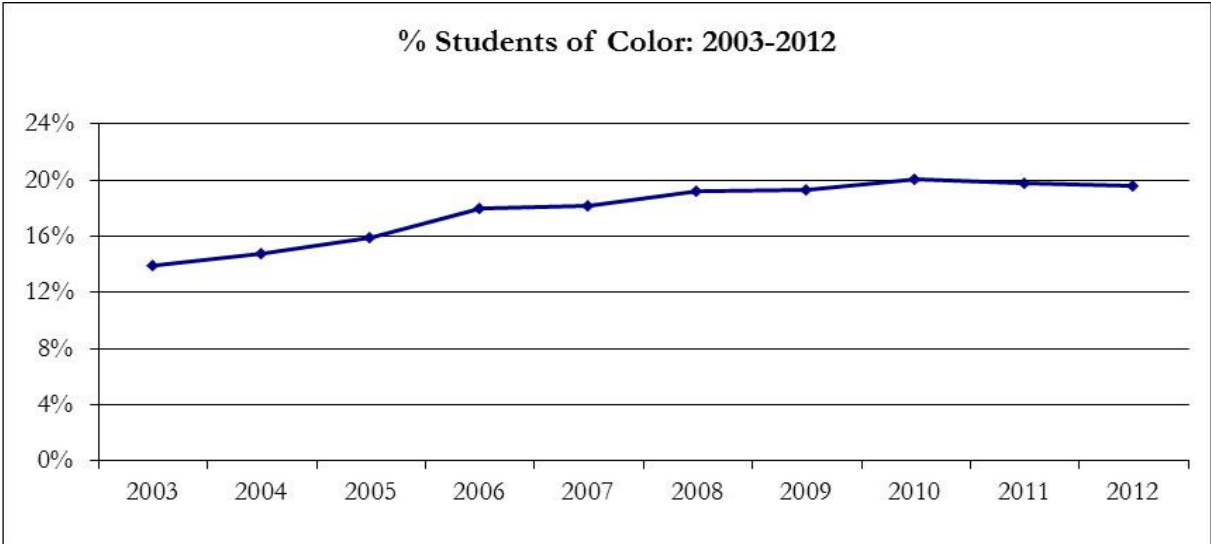
TABLE OF CONTENTS

1	Student Enrollment
2	Charts: Fall FTE and % Female FTE
3	Charts: Student Ethnicity at Whitman
4	Enrollment by State and Country
5	Chart: Enrollment by State
6	Undergraduates Living On and Off-Campus
7	Off-Campus Study
8	Co-Curricular Activities
9	First and Second Year Retention Rates
10	Retention Rates by Ethnicity
11	Graduation Rates
12	Graduation Rates by Ethnicity
13	Graduates by Major
15	Applicants
16	Admitted Students
17	Matriculants
18	Charts: Applicants and Admit Rate/Yield
19	Top Reasons for Choosing Whitman College
20	Financial Aid
21	Faculty
22	Faculty Demographics
23	Student-Faculty Ratio and Class Size
24	Staff
25	Tuition/Fees and Fund Raising
26	Endowment and Library
27	Trustees and Officers

STUDENT ENROLLMENT

Headcount	Fall Semester					Percent of Total (2012)	Change From One Year Ago	Change From Five Years Ago
	2008	2009	2010	2011	2012			
Total	1458	1515	1555	1596	1539	100.0%	-3.6%	5.6%
Full-time	1421	1483	1528	1566	1508	98.0%	-3.7%	6.1%
Part-time	37	32	27	30	31	2.0%	3.3%	-16.2%
Women	808	874	901	927	884	57.4%	-4.6%	9.4%
Men	650	641	654	669	655	42.6%	-2.1%	0.8%
Caucasian	955	1010	1058	1121	1104	71.7%	-1.5%	15.6%
Asian/Pacific Islander	147	167	122	125	123	8.0%	-1.6%	-16.3%
Hispanic	85	86	97	100	98	6.4%	-2.0%	15.3%
Black/African American	29	23	21	24	18	1.2%	-25.0%	-37.9%
International	46	40	46	39	42	2.7%	7.7%	-8.7%
American Indian/Alaska Native	19	16	13	13	15	1.0%	15.4%	-21.1%
Two or More Races	n/a	n/a	59	53	48	3.1%	-9.4%	
Unknown	177	173	139	121	91	5.9%	-24.8%	-48.6%
Washington Resident	586	585	589	591	547	35.5%	-7.4%	-6.7%
Out of State	872	930	966	1005	992	64.5%	-1.3%	13.8%
Fulltime Equivalent (FTE)	1434.4	1495.8	1537.1	1577.3	1520		-3.6%	6.0%
Degree-Seeking Undergrads Who Are First-Generation College Students	162 11.1%	176 11.6%	194 12.5%	171 10.7%	145 9.4%		-15.2% -12.1%	-10.5% -15.2%
Percent Students of Color	19.2%	19.3%	16.3%	16.4%	19.6%		19.5%	2.2%

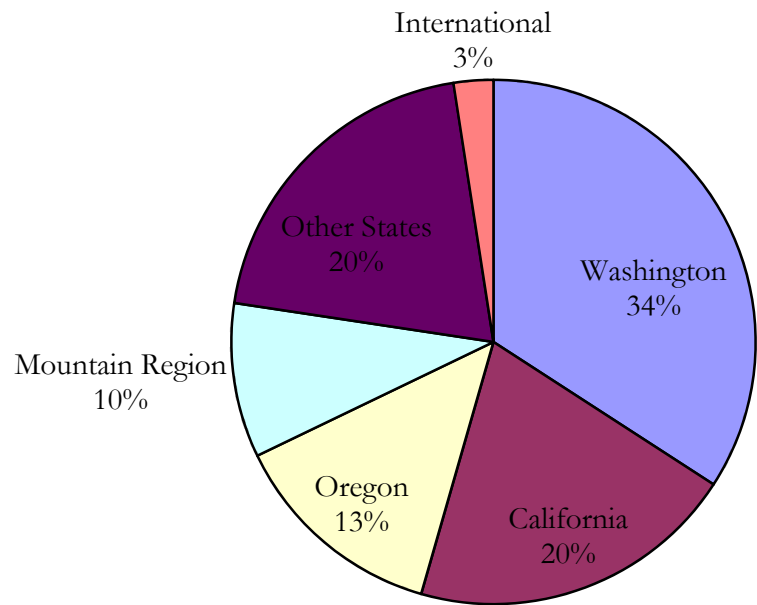




FALL 2012 ENROLLMENT by HOME STATE and COUNTRY

Home State	All Students	FY Students	Home State	All Students	FY Students	Home Country	All Students	FY Students						
Pacific	1118	72.6%	267	70.1%	South Central	40	2.6%	9	2.4%	US Territories	1	0.1%	1	0.3%
Alaska	21		3		Arkansas	3		0		Canada	3	0.2%	1	0.3%
California	324		91		Louisiana	1		0		Other International	49	3.2%	14	3.7%
Hawaii	14		1		Oklahoma	1		0		Australia	1		0	
Oregon	214		51		Texas	35		9		China	13		5	
Washington	545		121		Southeast	20	1.3%	4	1.0%	Egypt	2		1	
Mountain	137	8.9%	31	8.1%	Alabama	1		0		Ethiopia	1		0	
Arizona	13		3		Florida	7		1		Guatemala	1		0	
Colorado	44		11		Georgia	1		0		India	3		0	
Idaho	27		4		Kentucky	0		0		Japan	3		1	
Montana	16		3		Mississippi	0		0		Kenya	3		0	
Nevada	14		3		North Carolina	4		1		Lesotho	2		0	
New Mexico	11		5		South Carolina	1		0		Mexico	2		1	
Utah	10		2		Tennessee	1		0		Montenegro	1		0	
Wyoming	2		0		Virginia	4		2		Philippines	1		1	
North Central	94	6.1%	28	7.3%	West Virginia	1		0		Rwanda	1		1	
Illinois	8		2		Northeast	77	5.0%	26	6.8%	South Africa	2		0	
Indiana	5		0		Connecticut	8		3		Syria	1		0	
Iowa	2		0		Delaware	1		0		Taiwan	1		0	
Kansas	2		1		District of Columbia	3		1		Thailand	3		2	
Michigan	2		0		Maine	4		0		Trinidad and Tobago	1		0	
Minnesota	51		20		Maryland	3		2		United Kingdom	3		1	
Missouri	4		2		Massachusetts	20		10		Venezuela	1		0	
Nebraska	0		0		New Hampshire	5		1		Vietnam	1		1	
North Dakota	0		0		New Jersey	3		1		Undisclosed	2		0	
Ohio	9		3		New York	13		4						
South Dakota	2		0		Pennsylvania	6		1						
Wisconsin	9		0		Rhode Island	1		0						
					Vermont	10		3						

HOME STATES and REGIONS for FALL 2012 ENROLLED STUDENTS



State	Count
Washington	545
California	324
Oregon	214
Mountain Region	152
Other States	322
International	39

UNDERGRADUATES LIVING ON CAMPUS AND OFF CAMPUS

Undergraduate Headcount	FALL OF					Change From One Year Ago	Change From Four Years Ago
	2008	2009	2010	2011	2012		
Total	1458	1515	1555	1596	1539	-3.6%	5.6%
Living in Residence Hall	761	773	777	774	736	-4.9%	-3.3%
Living in an Interest House	81	84	79	82	78	-4.9%	-3.7%
Living in Fraternity House	87	98	105	118	104	-11.9%	19.5%
Living in a College Owned House	78	76	80	110	105	-4.5%	34.6%
Living in an Off Campus Location	451	484	514	512	516	0.8%	14.4%
Percent Living On Campus	69.1%	68.1%	66.9%	67.9%	66.5%	-2.1%	-3.8%
Percent Living Off Campus	30.9%	31.9%	33.1%	32.1%	33.5%	4.5%	8.4%

OFF-CAMPUS STUDY ENROLLMENTS

Headcount	Academic Year				
	2008-09	2009-10	2010-11	2011-12	2012-13*
Total Students Abroad	172	191	202	139	150
Percentage of Juniors Abroad	45%	49%	49%	37%	36%
Abroad Full Academic Year	8	10	10	10	7
Abroad Fall Only	91	73	70	45	55
Abroad Spring Only	73	108	122	84	88
Total Student Semesters Abroad	180	201	212	149	157
Summer Only	56	27	14	22	18
U.S. Partner Programs Fall Only	3	3	4	3	2
U.S. Partner Programs Spring Only	2	5	4	4	11
Student Destinations					
Europe & Oceania	116	141	128	87	94
Africa/Asia/Latin Am/Middle East	59	53	75	52	65
Europe & Oceania	66%	73%	63%	63%	59%
Africa/Asia/Latin Am/Middle East	34%	27%	37%	37%	41%

Change From One Year Ago	Change From Four Years Ago
7.9%	-12.8%
-2.7%	-20.0%
-30.0%	-12.5%
22.2%	-39.6%
4.8%	20.5%
5.4%	-12.8%
-18.2%	-67.9%
-33.3%	-33.3%
175.0%	450.0%

* Numbers for Spring 2013 are projections.

CO-CURRICULAR ACTIVITIES

	Acadaemic Year					Change From One Year Ago	Change From Four Years Ago
	2008-09	2009-10	2010-11	2011-12	2012-13		
Number of Men's Varsity Sports	9	7	7	7	7	0.0%	-22.2%
Number of Women's Varsity Sports	9	7	7	7	7	0.0%	-22.2%
Number of Male Varsity Athletes	109	109	121	111			
Number of Female Varsity Athletes	91	109	117	112			
Number of Men's Club Sports	8	10	10	10	10	0.0%	25.0%
Number of Women's Club Sports	7	9	9	9	9	0.0%	28.6%
Number of IM Sports	9	9	9	9	9	0.0%	0.0%
N of Men in Fraternities	240	236	243		331		
N of Women in Sororities	236	234	251		328		
% of Men in Fraternities	39%	39%	36%		51%		
% of Women in Sororities	31%	29%	27%		37%		
Number of August Scramble Trips	16	17	19	19	20	5.3%	25.0%
Number of FY Students on August Scramble Trips	138	149	159	176	178	1.1%	29.0%
Number of students applying for funding for summer internships	42	57	71	71	84	18.3%	100.0%
Number of students awarded funds for summer internships	26	26	31	31	76	145.2%	192.3%
Percentage of interested students funded for summer internships	62%	46%	44%	44%	90%	107.2%	46.2%
Number of Students Participating in Community Service*	526	650	686		680		29.3%
Total Number of Community Service Hours*	8,025	10,000	10,800		10,000		24.6%
Number of Student-Run Community Service Programs	6	6	6	6	6	0.0%	0.0%
Number of ASWC-Recognized Student Clubs**	40	53	45	53	50	-5.7%	25.0%

* Numbers for community service participation are estimates. Many Whitman students do volunteer work without formally going through our Center for Community Service.

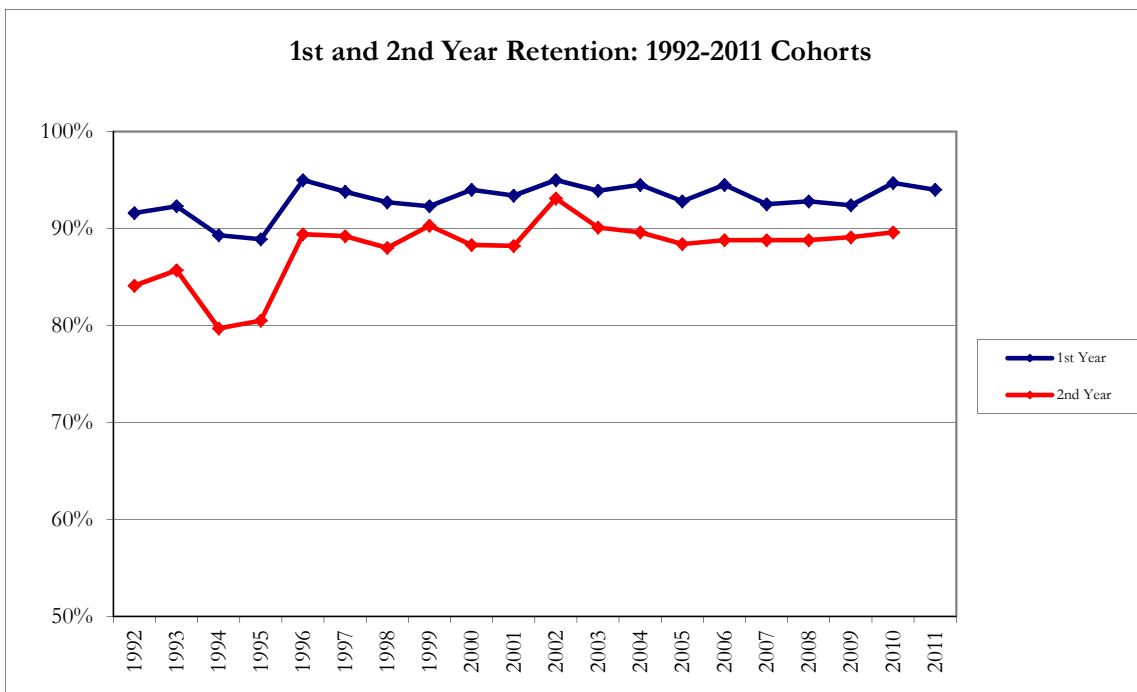
** There are many more established student clubs that do not go through the ASWC recognition process and we don't have a good way of keeping track of them. These groups include the a capella choirs, Whitman Investment Club, and some religious groups.

FIRST AND SECOND YEAR RETENTION RATES

Cohort Year	1 st Year Retention*	2 nd Year Retention**
1992	91.6%	84.1%
1993	92.3%	85.7%
1994	89.3%	79.7%
1995	88.9%	80.5%
1996	95.0%	89.4%
1997	93.8%	89.2%
1998	92.7%	88.0%
1999	92.3%	90.3%
2000	94.0%	88.3%
2001	93.4%	88.2%
2002	95.0%	93.1%
2003	93.9%	90.1%
2004	94.5%	89.6%
2005	92.8%	88.4%
2006	94.5%	88.8%
2007	92.5%	88.8%
2008	92.8%	88.8%
2009	92.4%	89.1%
2010	94.7%	89.6%
2011	94.0%	---

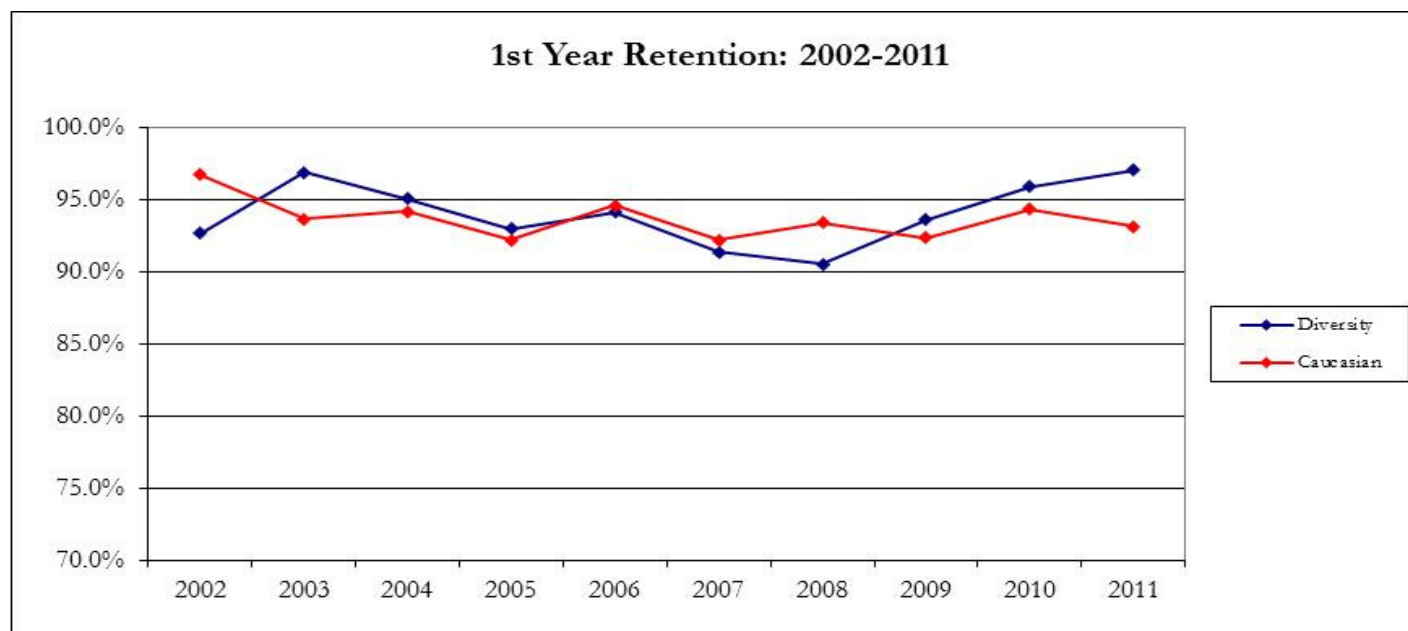
* Indicates % of original cohort returning for the 2nd year.

** Indicates % of original cohort returning for the 3rd year.



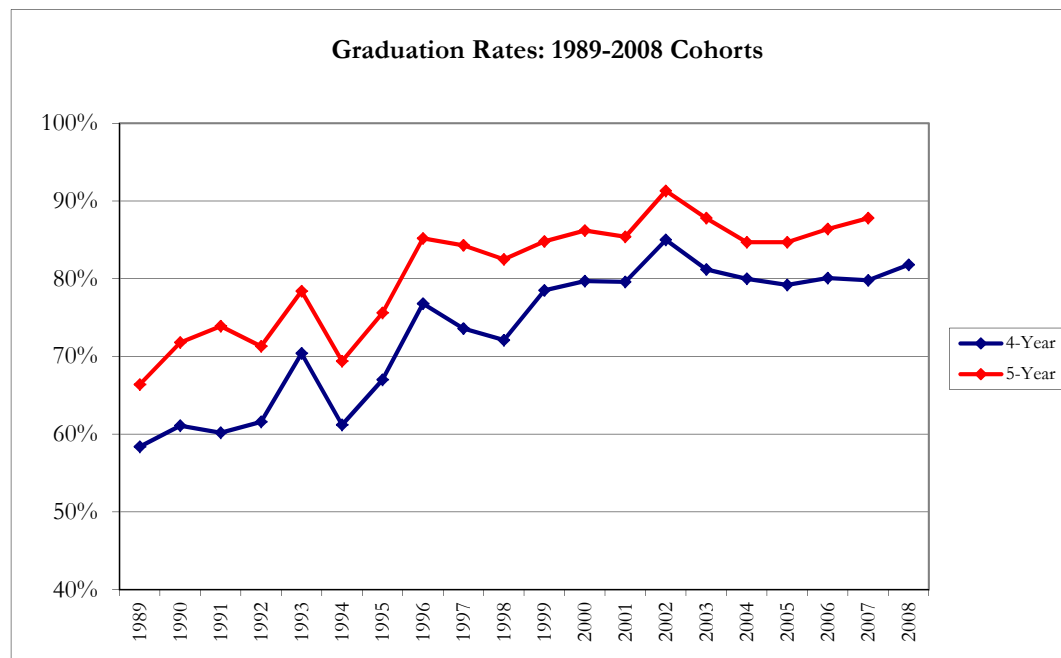
Retention Rates by Ethnicity: Combined 2006 - 2010 cohorts

Ethnicity	Starting	Returning for 2nd Year	Returning for 3rd Year	Total Withdrawn	1st Year Retention	2nd Year Retention	% Withdrawn
Native American	26	21	20	4	80.8%	76.9%	15.4%
Asian/Pacific Islander	215	204	196	8	94.9%	91.2%	3.7%
African-American	33	30	30	2	90.9%	90.9%	6.1%
Caucasian	1340	1251	1191	91	93.4%	88.9%	6.8%
Hispanic	110	103	96	8	93.6%	87.3%	7.3%
International	56	54	54	2	96.4%	96.4%	3.6%
Unknown	182	169	162	15	92.9%	89.0%	8.2%
<i>Total Diversity</i>	<i>399</i>	<i>372</i>	<i>354</i>	<i>24</i>	<i>93.2%</i>	<i>88.7%</i>	<i>6.0%</i>
Total	1977	1846	1761	132	93.4%	89.1%	6.7%



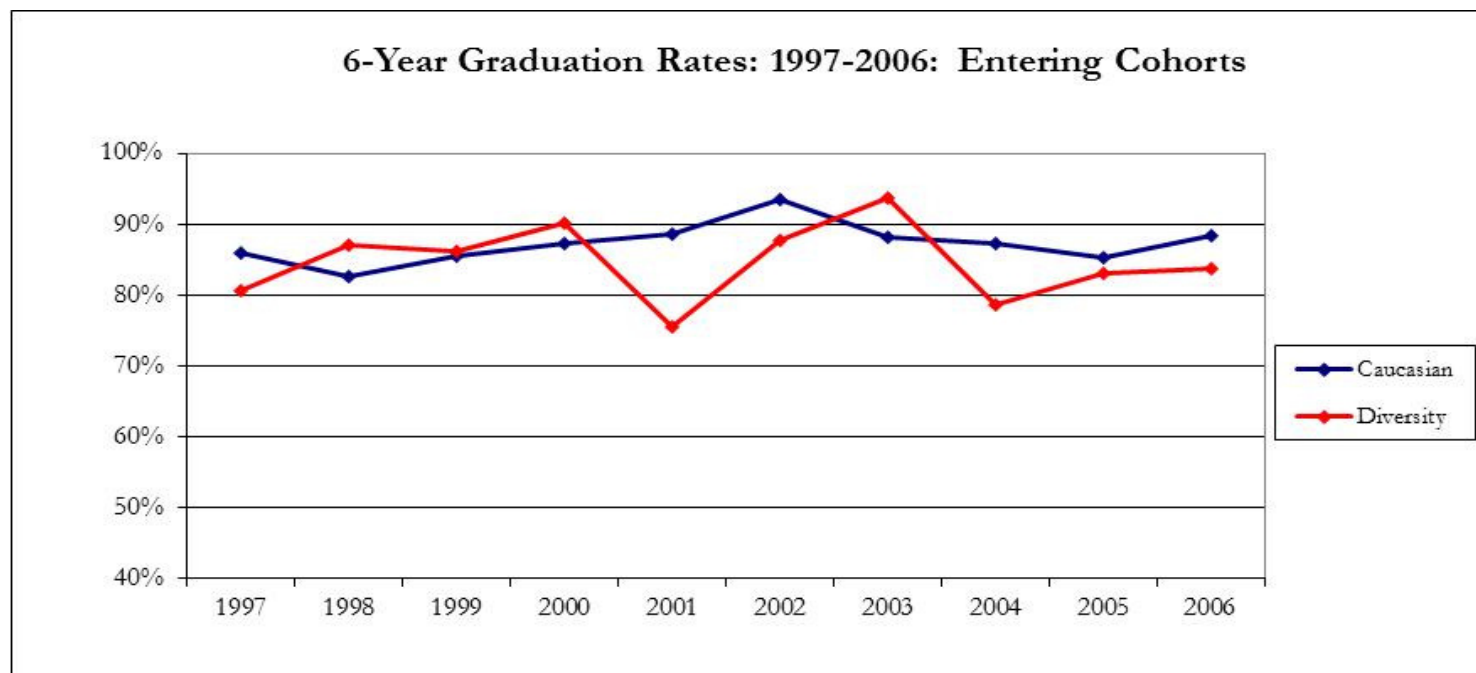
GRADUATION RATES

First-Year Cohort	Graduating in 4 Years	Graduating in 5 Years	Graduating in 6 years
1989	58.4%	66.4%	73.5%
1990	61.1%	71.8%	73.1%
1991	60.2%	73.9%	75.2%
1992	61.6%	71.3%	73.4%
1993	70.4%	78.4%	80.1%
1994	61.2%	69.4%	70.7%
1995	67.0%	75.6%	75.9%
1996	76.8%	85.2%	86.5%
1997	73.6%	84.3%	85.3%
1998	72.1%	82.5%	83.3%
1999	78.5%	84.8%	86.2%
2000	79.7%	86.2%	88.0%
2001	79.6%	85.4%	86.2%
2002	85.0%	91.3%	92.3%
2003	81.2%	87.8%	89.2%
2004	80.0%	84.7%	85.7%
2005	79.2%	84.7%	85.6%
2006	80.1%	86.4%	87.5%
2007	79.8%	87.8%	---
2008	81.8%	---	---



6-Year Graduation Rates by Ethnicity: 2002-2006 cohorts

	<u>Starting</u>	<u>Graduated</u>	<u>%</u>
Native American	23	19	82.6%
Asian	170	149	87.6%
African-American	38	30	78.9%
Caucasian	1241	1100	88.6%
Hispanic	74	62	83.8%
International	52	51	98.1%
Unknown	255	221	86.7%
<i>All Diversity</i>	<i>305</i>	<i>260</i>	<i>85.2%</i>
Total	1853	1632	88.1%



GRADUATES BY MAJOR

Major	SPRING OF					Change From One Year Ago	Change From Four Years Ago
	2008	2009	2010	2011	2012		
Anthropology	10	3	4	6	12	100.0%	20.0%
Art	8	12	20	24	12	-50.0%	50.0%
Art History	10	6		1	9	800.0%	-10.0%
Asian Studies	5	10	5	4	6	50.0%	20.0%
Astronomy		1		2	2	0.0%	
BBMB	18	12	12	24	21	-12.5%	16.7%
Biology-Environmental Studies	7	7	9	2	4	100.0%	-42.9%
Biology-Geology		1	1				
Biology	26	29	23	34	39	14.7%	50.0%
Chemistry-Environmental Studies	3		1		1		-66.7%
Chemistry-Geology		1	1		4		
Chemistry	13	5	14	12	15	25.0%	15.4%
Classics	3	1	6	1	3	200.0%	0.0%
Economics-Environmental Studies		4	1	4	2	-50.0%	
Economics-Mathematics	2	1	4	1	4	300.0%	100.0%
Economics	24	19	26	34	30	-11.8%	25.0%
English	35	21	32	25	26	4.0%	-25.7%
Environmental Studies-Humanities	8	11	8	9	8	-11.1%	0.0%
French	1	2	5	5	5	0.0%	400.0%
Gender Studies	3	5	2	3			
German	3	3	1	1	2	100.0%	-33.3%
Geology-Astronomy	1				1		0.0%
Geology-Environmental Studies	5	5	4	5	2	-60.0%	-60.0%
Geology-Physics			1	1			
Geology	7	4	10	13	10	-23.1%	42.9%
History	22	13	22	20	22	10.0%	0.0%
Latin American Studies	3	1	3	1			
Mathematics-Computer Science							
Mathematics-Physics	3			1	2	100.0%	-33.3%
Mathematics	11	18	8	7	5	-28.6%	-54.5%

Major	SPRING OF				
	2008	2009	2010	2011	2012
Music	6	14	10	13	8
Natural and Mathematical Sciences			2	5	7
Philosophy	20	21	12	15	17
Physics-Astronomy	7	4	1	2	2
Physics-Environmental Studies		2	1		1
Physics	6	7	1	1	3
Politics-Environmental Studies	7	5	9	8	8
Politics	23	23	34	25	37
Psychology	38	29	29	33	37
Race and Ethnic Studies	2	3	5	6	9
Religion	7	8	8	6	9
Rhetoric and Film Studies	7	9	16	7	6
Sociology-Environmental Studies	5	7	5	4	8
Sociology	14	11	14	17	24
Spanish	13	8	12	14	20
Theater	11	8	8	9	9
Individually Planned	2	3	1	3	2
Environmental Studies total	35	41	28	32	34

Change From One Year Ago	Change From Four Years Ago
-38.5%	33.3%
40.0%	
13.3%	-15.0%
0.0%	-71.4%
200.0%	-50.0%
0.0%	14.3%
48.0%	60.9%
12.1%	-2.6%
50.0%	350.0%
50.0%	28.6%
-14.3%	-14.3%
100.0%	60.0%
41.2%	71.4%
42.9%	53.8%
0.0%	-18.2%
-33.3%	0.0%
6.3%	-2.9%

GRADUATES BY ACADEMIC DIVISION

Major	SPRING OF				
	2008	2009	2010	2011	2012
Division 1	145	115	148	152	184
Division 2	132	124	138	130	134
Division 3	109	97	93	110	123
Division 4	13	19	15	14	15

Change From One Year Ago	Change From Five Years Ago
21.1%	26.9%
3.1%	1.5%
11.8%	12.8%
7.1%	15.4%

Division 4 includes Asian Studies, Gender Studies, Latin American Studies, and Race/Ethnic Studies

FIRST-YEAR APPLICANTS FOR ADMISSION

Headcount	Fall of					Percent of Total (2012)
	2008	2009	2010	2011	2012	
Total	3,164	3,309	3,197	3,079	2,854	100%
Women	1,858	1,989	1,923	1,865	1,731	61%
Men	1,238	1,301	1,241	1,221	1,123	39%
White, non-Hispanic	1,868	1,972	1966	1968	1781	62%
Asian/Pacific Islander	342	346	406	257	210	7%
Hispanic	135	210	226	234	251	9%
Black, non-Hispanic	48	65	61	51	32	1%
American Indian/Alaska Native	30	33	50	11	5	0%
Two or More Races				146	201	7%
International	338	339	303	286	284	10%
Unknown	403	345	185	144	90	3%

Change From One Year Ago	Change From Four Years Ago
-7.3%	-9.8%
-7.2%	-6.8%
-8.0%	-9.3%
-9.5%	-4.7%
-18.3%	-38.6%
7.3%	85.9%
-37.3%	-33.3%
-54.5%	-83.3%
37.7%	
-0.7%	-16.0%
-37.5%	-77.7%

Admit Rate by Gender and Ethnicity

Percent of applicants who were admitted	2008	2009	2010	2011	2012
Women	45.6%	43.2%	44.6%	53.1%	48.1%
Men	46.0%	44.8%	51.2%	54.4%	49.4%
White, non-Hispanic	47.5%	45.5%	50.4%	61.4%	52.3%
Asian/Pacific Islander	50.9%	57.8%	53.0%	52.9%	48.6%
Hispanic	58.5%	52.4%	51.3%	47.0%	47.4%
Black, non-Hispanic	54.2%	67.7%	57.4%	33.3%	40.6%
American Indian/Alaska Native	63.3%	63.6%	66.0%	63.6%	80.0%
Two or More Races					63.2%
International	13.0%	8.6%	11.9%	12.9%	12.7%
Unknown	46.4%	40.9%	36.2%	44.4%	62.2%
Total Admit Rate	44.8%	43.6%	46.7%	53.7%	48.6%

Change From One Year Ago	Change From Five Years Ago
-9.3%	5.6%
-9.1%	7.3%
-14.9%	10.0%
-8.2%	-4.5%
0.9%	-19.0%
21.9%	-25.0%
25.7%	26.3%
-2.0%	-2.6%
40.0%	34.1%
-9.5%	8.6%

ADMITTED FIRST-YEAR STUDENTS

Headcount	Fall of					Percent of Total (2012)
	2008	2009	2010	2011	2012	
Total	1,417	1,443	1,493	1,654	1,388	100.0%
Women	847	859	857	990	833	60.0%
Men	570	583	636	664	555	40.0%
White, non-Hispanic	888	898	991	1,209	931	67.1%
Asian/Pacific Islander	174	200	215	136	102	7.3%
Hispanic	79	110	116	110	119	8.6%
Black, non-Hispanic	26	44	35	17	13	0.9%
American Indian/Alaska Native	19	21	33	7	4	0.3%
Two or More Races				74	127	9.1%
International	44	29	36	37	36	2.6%
Unknown	187	141	67	64	56	4.0%

Change From One Year Ago	Change From Four Years Ago
-16.1%	-2.0%
-15.9%	-1.7%
-16.4%	-2.6%
-23.0%	4.8%
-25.0%	-41.4%
8.2%	50.6%
-23.5%	-50.0%
-42.9%	-78.9%
-2.7%	-18.2%
-12.5%	-70.1%

Yield Rate by Gender and Ethnicity

Percent of admitted students who enrolled	2008	2009	2010	2011	2012
Women	27.2%	27.7%	27.7%	23.3%	26.3%
Men	30.0%	27.1%	28.0%	25.5%	29.4%
White, non-Hispanic	30.7%	30.5%	28.5%	25.5%	30.3%
Asian/Pacific Islander	21.8%	23.0%	22.3%	21.3%	19.6%
Hispanic	22.8%	19.1%	25.0%	21.8%	23.5%
Black, non-Hispanic	30.8%	13.6%	37.1%	17.6%	15.4%
American Indian/Alaska Native	36.8%	28.6%	27.3%	42.9%	25.0%
Two or More Races					19.7%
International	27.3%	27.6%	41.7%	21.6%	36.1%
Unknown	24.1%	24.8%	28.4%	26.6%	19.6%

Change From One Year Ago	Change From Five Years Ago
12.7%	-3.2%
15.4%	-2.1%
18.9%	-1.5%
-8.0%	-10.2%
7.8%	3.3%
-12.8%	-50.0%
-41.7%	-32.1%
67.0%	32.4%
-26.1%	-18.4%

Total Yield Rate	28.3%	27.4%	27.8%	24.2%	27.5%
------------------	-------	-------	-------	-------	-------

13.8%	-2.7%
-------	-------

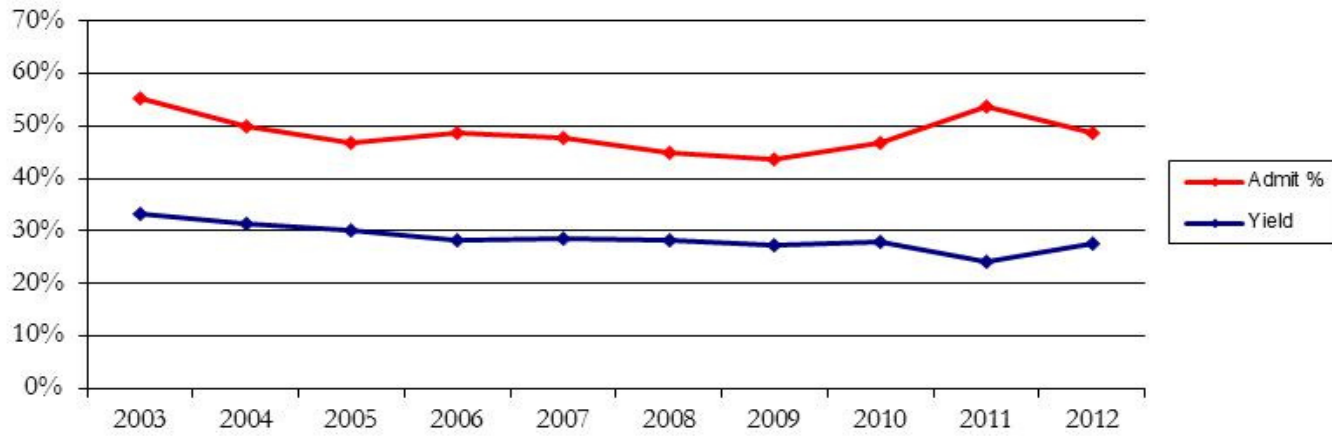
MATRICULANTS - First-Year Students

Headcount	Fall of					Percent of Total (2012)	Change From One Year Ago	Change From Four Years Ago
	2008	2009	2010	2011	2012			
Total	401	396	415	400	382	100.0%	-4.5%	-4.7%
Women	230	238	237	231	219	57.3%	-5.2%	-4.8%
Men	171	158	178	169	163	42.7%	-3.6%	-4.7%
White, non-Hispanic	273	274	282	308	282	73.8%	-8.4%	3.3%
Asian/Pacific Islander	38	46	48	29	20	5.2%	-31.0%	-47.4%
Hispanic	18	21	29	24	28	7.3%	16.7%	55.6%
Black, non-Hispanic	8	6	13	3	2	0.5%	-33.3%	-75.0%
American Indian/Alaska Native	7	6	9	3	1	0.3%	-66.7%	-85.7%
Two or More Races				8	25	6.5%	n/a	n/a
International	12	8	15	8	13	3.4%	62.5%	8.3%
Unknown	45	35	19	17	11	2.9%	-35.3%	-75.6%
Median SATV (Critical Reading)	675	680	670	690	670		-2.9%	-0.7%
Median SATM (Math)	650	660	660	670	660		-1.5%	1.5%
Median SATW (Writing)	670	660	660	660	660		0.0%	-1.5%
Median Combined SAT	1995	2000	1990	2030	1980		-2.5%	-0.8%
Mean High School GPA	3.81	3.79	3.79	3.81	3.76		-1.3%	-1.3%
Percent in Top 10% of HS Class	70.9%	66.7%	62.2%	67%	63.8%		-4.8%	-10.0%

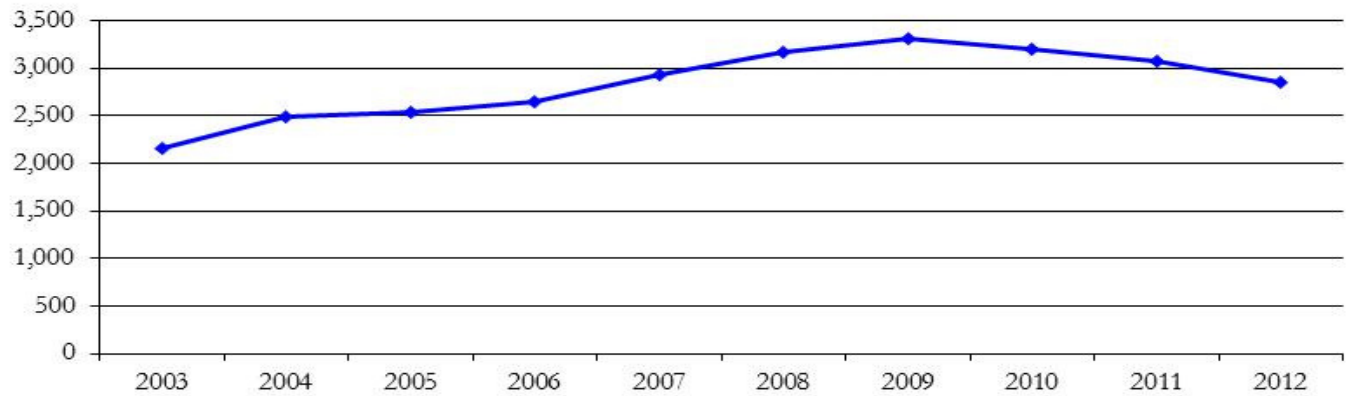
MATRICULANTS-Transfer Students

Total	21	21	22	22	23		4.5%	9.5%
-------	----	----	----	----	----	--	------	------

Admit Rate and Yield: 2003-2012



Actionable Applicants: 2003-2012



TOP REASONS FOR CHOOSING WHITMAN COLLEGE

	Incoming Fall First-Year Cohort					Change from One Year Ago	Change from Four Years Ago
	2008	2009	2010	2011	2012		
Good academic reputation	84.2	78.6	80.5	77.7	76.7	-1.3%	-8.9%
Campus Visit	67.3	63.9	64.0	67.4	69.6	3.3%	3.4%
Size of college	64.7	65.0	68.2	67.3	66.3	-1.5%	2.5%
Good social reputation	54.8	45.2	44.4	42.2	49.9	18.2%	-8.9%
Offered financial assistance	47.0	43.0	43.7	38.7	39.1	1.0%	-16.8%
Graduates get good jobs	41.7	40.2	36.6	33.2	37.7	13.6%	-9.6%
Graduates go to top grad schools	38.5	36.9	31.5	30.1	33.9	12.6%	-11.9%
Applied Early Decision	20.8	28.2	26.4	17.8	25.2	41.6%	21.2%
Information from a website	20.2	23.8	21.1	20.7	22.3	7.7%	10.4%
Rankings in national magazine	24.5	23.3	22.5	20.9	22.0	5.3%	-10.2%

Numbers indicate the percentage of incoming first-year students marking each reason as "very important" in their decision to attend Whitman

Source: CIRP First Year Survey, 2008-2012

FINANCIAL AID
Degree-Seeking Undergraduates Only

	Academic Year					Change From One Year Ago	Change From Four Years Ago
	2008	2009	2010	2011	2012		
% Receiving Financial Aid	76%	81%	80%	79%	86%	8.2%	12.5%
% Receiving a Pell Grant	11%	11%	13%	14%	11%	-21.4%	0.0%
% Receiving Need-Based Aid	46%	45%	47%	49%	48%	-2.0%	4.3%
% Receiving Merit-Based Aid Only	19%	19%	19%	22%	38%	71.4%	98.4%
% Receiving Need-Based and Merit-Based Aid	16%	18%	19%	27%	22%	-18.5%	37.5%
Average Merit-Based Scholarship	\$8,610	\$8,528	\$9,101	\$8,468	\$9,649	13.9%	12.1%
Average Need Based Scholarship / grant	\$21,272	\$22,394	\$24,251	\$23,006	\$23,601	2.6%	10.9%
Average Student Loan	\$4,474	\$5,048	\$5,978	\$5,819	\$6,598	13.4%	47.5%
Average Student Work/Study	\$2,026	\$1,984	\$1,833	\$1,743	\$1,987	14.0%	-1.9%
Average Total Financial Aid Package inc. loan and work	\$27,772	\$29,426	\$32,062	\$30,500	\$32,186	5.5%	15.9%
Average Debt at Graduation	\$15,350	\$17,956	\$14,285	\$17,711	\$16,830	-5.0%	9.6%
% of Graduating Seniors with Debt	50%	50%	47%	45%	49%	8.9%	-2.0%
Scholarship Expenditures	\$18,504,239	\$20,588,231	\$22,243,309	\$23,196,000	\$22,251,829	-4.1%	20.3%
Discount Rate	36.4%	38.3%	39.5%	37.20%	36%	-3.2%	-1.1%

FACULTY

	Academic Year					Change From One Year Ago	Change From Four Years Ago
	2008-09	2009-10	2010-11	2011-12	2012-13		
Total	184	186	196	200	205	2.5%	11.4%
Full-Time	129	130	134	134	146	9.0%	13.2%
Part-Time	55	56	62	66	59	-10.6%	7.3%
% Full-Time	69.4%	70.1%	69.9%	67.0%	71.2%	6.3%	2.6%
% Part-Time	30.6%	29.9%	30.1%	33.0%	28.8%	-12.8%	-5.9%
Full-Time Only							
Tenured	72	73	76	75	77	2.7%	6.9%
Tenure Track	42	35	33	34	41	20.6%	-2.4%
Tenured+Tenure Track	114	108	109	109	118	8.3%	3.5%
Non Tenure Track	15	22	25	25	28	12.0%	86.7%
With PhD	107	107	111	111	124	11.7%	15.9%
With Terminal Degree	121	123	128	125	139	11.2%	14.9%
% Tenured & Tenure Track	88.4%	83.1%	81.3%	81.3%	80.8%	-0.6%	-8.5%
% Tenured	55.8%	56.2%	56.7%	56.0%	52.7%	-5.8%	-5.5%
% with PhD	82.9%	82.3%	82.8%	82.8%	84.9%	2.5%	2.4%
% with Terminal Degree	93.8%	94.6%	95.5%	93.3%	95.2%	2.1%	1.5%
Full	35	30	33	31	30	-3.2%	-14.3%
Associate	38	43	43	44	47	6.8%	23.7%
Assistant	49	51	53	52	63	21.2%	28.6%
Instructor	7	6	5	7	6	-14.3%	-14.3%

FACULTY DEMOGRAPHICS

	Academic Year					Change From One Year Ago	Change From Four Years Ago
	2008-09	2009-10	2010-11	2011-12	2012-13		
Full-Time							
Total	129	130	134	134	146	9.0%	13.2%
Women	56	57	58	59	70	18.6%	25.0%
Men	73	73	76	75	76	1.3%	4.1%
% Women	43.4%	43.8%	43.3%	44.0%	47.9%	8.9%	10.4%
White	109	110	113	118	124	5.1%	13.8%
Asian	9	9	11	10	12	20.0%	33.3%
Hispanic	3	5	5	2	3	50.0%	0.0%
Black or African American	5	5	4	3	3	0.0%	-40.0%
Other	3	1	1	1	4	300.0%	33.3%
Unknown	0	0	0	0	0		
% FT Faculty of Color	15.5%	15.4%	15.7%	11.9%	15.1%	26.2%	-2.8%
Part-Time							
Total	55	56	62	66	59	-10.6%	7.3%
Women	25	25	27	32	25	-21.9%	0.0%
Men	30	31	35	34	34	0.0%	13.3%
% Women	45.5%	44.6%	43.5%	48.5%	42.4%	-12.6%	-6.8%
White	54	54	60	63	55	-12.7%	1.9%
Asian	1	1	2	2	2	0.0%	100.0%
Hispanic	0	0	0	1	0		
Black or African American	0	0	0	0	0		
Other	0	1	0	0	2		
Unknown	0	0	0	0	0		
% PT Faculty of Color	1.8%	3.6%	3.2%	4.5%	6.8%	49.2%	272.9%

STUDENT-FACULTY RATIO and CLASS SIZE

	Fall Semester					Change From One Year Ago	Change From Four Years Ago
	2008	2009	2010	2011	2012		
Student-Faculty Ratio	9.58	9.96	9.89	9.75	8.89	-8.8%	-7.2%
Average Class Size	15.6	16.9	19.0	19.0	18.2	-4.4%	16.5%
Percent of Classes with:							
1-9 students	23.4%	18.5%	16.3%	17.1%	16.9%	-1.0%	-27.6%
10-19 students	51.2%	48.8%	46.8%	45.4%	45.7%	0.6%	-10.7%
20-29 students	18.4%	26.1%	20.2%	20.3%	23.6%	16.5%	28.3%
30-39 students	5.0%	4.5%	11.5%	11.7%	8.6%	-26.3%	73.5%
40-49 students	1.5%	1.2%	4.5%	5.1%	4.8%	-6.0%	227.8%
50-59 students	0.6%	0.9%	0.6%	0.3%	0.3%	6.5%	-45.4%
Total N of Classes	342	330	312	315	313	-0.6%	-8.5%

STAFF

	Acadaemic Year					Change From Two Years Ago	Change From Eight Years Ago
	2003-04	2005-06	2007-08	2009-10	2011-12		
Full Time	214	216	241	252	247	-2.0%	15.4%
Part Time	59	64	59	62	63	1.6%	6.8%
<u>Full Time Only</u>							
Exec/Admin/Managerial	67	65	71	66	61	-7.6%	-9.0%
Other Professional	42	44	56	34	45	32.4%	7.1%
Technical and Paraprofessional	4	4	4	32	18	-43.8%	350.0%
Clerical and Secretarial	49	48	54	57	59	3.5%	20.4%
Skilled Crafts	6	7	7	5	6	20.0%	0.0%
Service/Maintenance	46	48	49	58	58	0.0%	26.1%
Black/African-American	4	4	4	3	4	33.3%	0.0%
Native American	4	2	1	2	1	-50.0%	-75.0%
Asian/Pacific Islander	9	5	11	9	4	-55.6%	-55.6%
Hispanic	3	2	9	12	15	25.0%	400.0%
Caucasian	192	202	215	223	220	-1.3%	14.6%
Two or More Races					3		
International	0	0	0	1	0		
Unknown	2	1	1	2	0		

These figures exclude faculty.

"Technical and Paraprofessional" was defined differently for the 2009-10 reporting year.

Source: IPEDS Human Resources Survey

The IPEDS Human Resources Survey is conducted in the fall of odd-numbered years.

TUITION, FEES, ROOM AND BOARD

	Academic Year				
	2008-09	2009-10	2010-11	2011-12	2012-13
Tuition	\$34,880	\$36,620	\$38,450	\$40,180	\$41,790
Fees	\$312	\$320	\$320	\$316	\$315
Room and Board	\$8,820	\$9,260	\$9,720	\$10,160	\$10,560
Total	\$44,012	\$46,200	\$48,490	\$50,656	\$52,665

Change From One Year Ago	Change From Four Years Ago
4.0%	19.8%
-0.3%	1.0%
3.9%	19.7%
4.0%	19.7%

FUND RAISING

	Fiscal Year				
	2007-08	2008-09	2009-10	2010-11	2011-12
Total Gifts (Face Value)	\$13,329,034	\$11,149,648	\$12,584,449	\$15,257,795	\$18,585,606
Total Gifts (Net Present Value)	\$12,855,819	\$10,416,088	\$12,467,779	\$14,930,541	\$15,024,370
Alumni Solicited	12,504	12,590	12,765	13,085	13,384
Alumni Giving	5,908	5,821	5,820	5,684	5,521
% Giving	47.2%	46.2%	45.6%	43.4%	41.3%

Change From One Year Ago	Change From Four Years Ago
21.8%	39.4%
0.6%	16.9%
2.3%	7.0%
-2.9%	-6.6%
-5.0%	-12.7%

ENDOWMENT, OPERATING BUDGET, and TUITION DISCOUNT RATE

	Fiscal Year					Change From One Year Ago	Change From Four Years Ago
	2007-08	2008-09	2009-10	2010-11	2011-12		
Endowment (in thousands) at End of Fiscal Year	\$387,566	\$296,723	\$334,814	\$395,609	\$400,968	1.4%	3.5%
Endowment Return	0.06%	-19.90%	13.38%	19.60%	2.90%	-85.2%	4733.3%
Endowment per Student	\$264,550	\$206,920	\$223,836	\$271,151	\$254,260	-6.2%	-3.9%
Tuition Revenue (in thousands)	\$47,018	\$49,897	\$53,453	\$57,540	\$61,401	6.7%	30.6%
Financial Aid (in thousands)	\$16,907	\$18,165	\$20,474	\$23,249	\$23,217	-0.1%	37.3%
Net Tuition (in thousands)	\$30,111	\$31,732	\$32,979	\$34,211	\$38,184	11.6%	26.8%
Discount Rate	35.96%	36.40%	38.30%	40.46%	37.81%	-6.5%	5.1%
Total Operating Budget (in thousands)	\$58,267	\$61,663	\$62,176	\$63,460	\$68,968	8.7%	18.4%

LIBRARY

	Fiscal Year					Change From One Year Ago	Change From Four Years Ago
	2007-08	2008-09	2009-10	2010-11	2011-12		
Library Holdings							
Bound Volumes	407,595	537,317	546,174	553,561	560,749	1.3%	37.6% *
Volumes added	8,334	7,832	8,683	7,124	7,188	0.9%	-13.8%
Serial Titles (print and electronic)	23,628	35,361	37,551	56,350	30,122	-46.5%	27.5%
Digital Books	2,125	2,507	2,601	4,347	6,450	48.4%	203.5%
Films	7,098	7,378	7,650	7,886	8,180	3.7%	15.2%

*In 2008-09 Library Volumes were, for the first time, counted using the library system. Prior to that, volumes were counted by making manual additions to a 20-year-old number.

TRUSTEES AND OFFICERS, 2012-13

Board of Trustees

Chair Peter Van Oppen '74

Vice-Chair Nancy B. Serrurier

Members

Janice Abraham '80	Megan Medica '81
Megan Clubb '79	Walter C. Minnick '64
John C. Coleman '73	Dean Allen Nichols '70
Andrew Ferrari '68	David Nierenberg
Karen E. Glover '72	John W. Stanton '77
Thomas McCracken '63	William Way '80
Bradley M. McMurchie '84	

Ex Officio George Bridges, President of the College
Peter Harvey, Treasurer and Secretary to the Board of Trustees

Budget Officers of Whitman College

George Bridges, President
John Bogley, Vice President for Development and College Relations
J. Antonio Cabasco, Dean of Admission and Financial Aid
Charles Cleveland, Dean of Students
Peter Harvey, Treasurer and Chief Financial Officer
Timothy Kaufman-Osborn, Provost and Dean of the Faculty
Dan Terrio, Chief Technology Officer