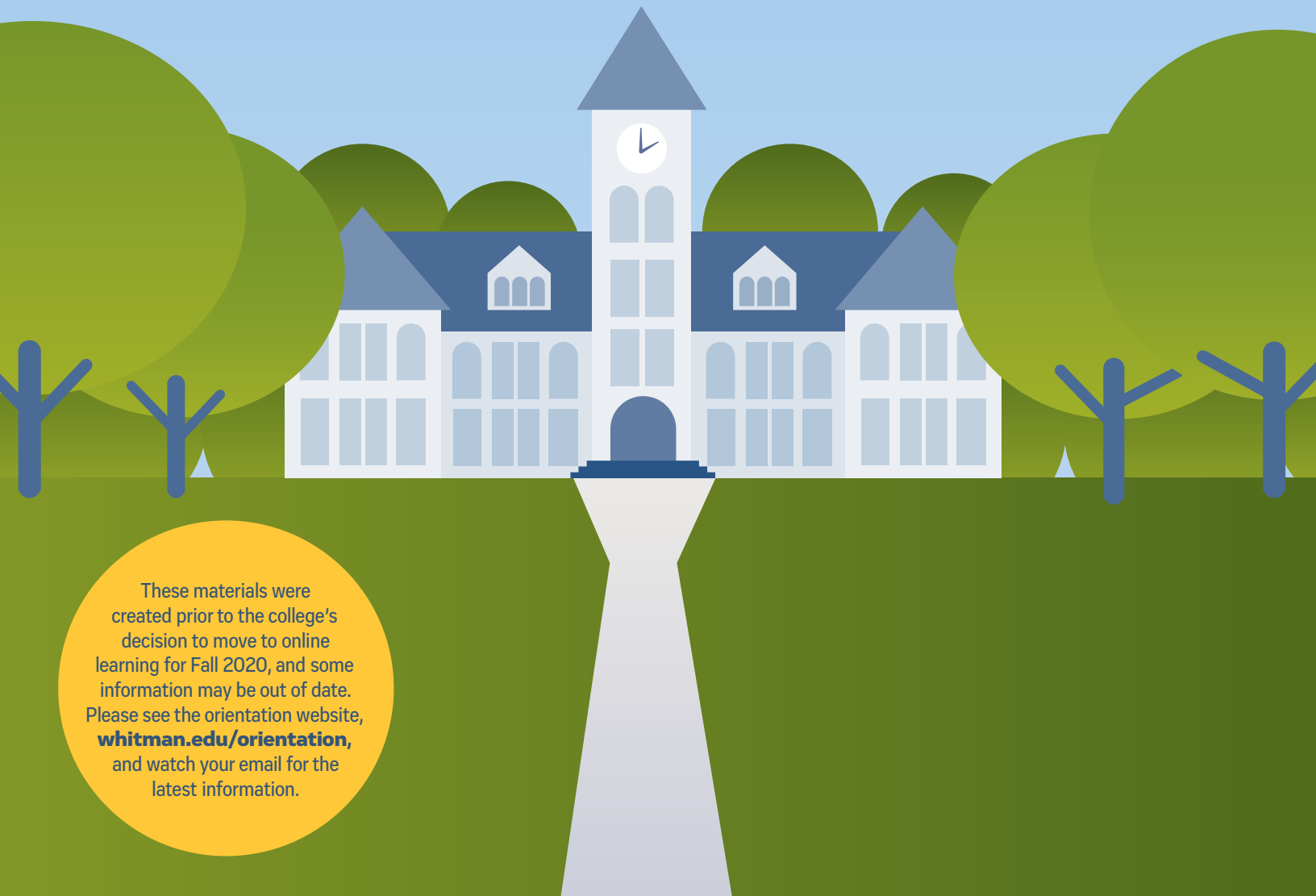


WHITMAN



These materials were created prior to the college's decision to move to online learning for Fall 2020, and some information may be out of date. Please see the orientation website, whitman.edu/orientation, and watch your email for the latest information.

International Student Welcome Guide
Fall 2020



Welcome



FROM THE **Dean of Students**

WELCOME TO THE WHITMAN COMMUNITY.

That's a word you'll hear a lot while you are a student here at Whitman: community. As you join us for orientation later this summer, you'll see what we mean. Let me assure you, it's not something we take lightly. In these days when "social distancing" has entered our vocabulary, we still believe in social connection. We know that for most of you, the last semester of high school was disrupted. You may have been physically distanced and socially disconnected. We want to rebuild community and connection. That is what we are welcoming you to: a place that connects you socially to others engaged in a common learning and living enterprise.

You will encounter many kinds of communities while you are a student here. First and foremost is the academic community. That community is here to push you outside of your intellectual comfort zone and expand the way you think about the world and your place in it. The academic community includes your professors, a group of extraordinarily talented teachers whose time in the classroom is informed and enhanced by their ongoing scholarly and creative work. These remarkable scholars and artists are anxious to share with you their vast experience and passion for teaching and learning, and support you while you stretch your mind.

But there's also the community you develop with your fellow students. You'll build this community through your learning in our First Year Seminars. You'll craft it over study sessions, shared meals and research projects. While you and your classmates push each other academically, you'll also develop deep bonds. That's where our academic community also becomes a social community.

This is your community: students who are excited about the world of ideas, club and intramural sports, varsity sports, board games, theater, student government, media, music, climate change and sustainability, social justice, diversity and inclusion, and much more. Over 100 different student organizations wait for you to join them. Your residence hall neighbors will become friends. Your professors will become mentors and confidants. Staff members across campus are allies, guiding you and offering resources to help you overcome whatever you are facing.

This is an exciting time to think about the community you will join when you get here. It will shape you in ways you can't yet anticipate. And we know that you will shape us, too. That's what community — and Whitman College — is all about.

Welcome to Whitman. Your Whitman. Our Whitman.

With gratitude,

Kazi Joshua
Dean of Students and Vice President for Student Affairs
Whitman College

WE'RE SO EXCITED

to welcome you to Whitman College. We are working hard to prepare an orientation program that is designed to give you and your family an introduction to the **ACADEMIC AND SOCIAL CULTURE** of our campus and community. We want to help you transition to college, while also **PROTECTING THE HEALTH OF ALL STUDENTS**.

In June, you will begin receiving our Monday Emails from Senior Associate Dean of Students Juli Dunn. These emails will help you prepare for your life at Whitman, as well as share updates about our orientation schedule and fall semester.

We have a team of faculty and staff working on a brand new orientation experience for you. Don't worry, we'll bring you along every step of the way. Make sure to activate your Whitman email (see instructions on page 5), and check your account regularly so you don't miss these important updates.

Arrival and Check-in

- International student check-in is Aug. 15-16. You will receive more information about housing in your Whitman email.
- Families who need overnight accommodations in Walla Walla are encouraged to make reservations as soon as possible. Information about lodging, restaurants and activities in our community is available at wallawalla.org. If you need more information about traveling to Walla Walla, go to whit.mn/traveling.

New Student Orientation

- International Student Orientation will be Aug. 17-19. This program is required for all international students. A schedule and more information will be posted at whitman.edu/international-services.
- International students will join other incoming students for New Student Orientation beginning Aug. 21. The schedule of 2020 orientation events will be available at whitman.edu/orientation later this summer.

Family Orientation

- Family Orientation will be held online, with information sessions that you can watch at any time. More information about Family Orientation will be posted at whitman.edu/parents.

International student orientation

is Aug. 17-19. Check your Whitman email for details!

Orientation and move-in schedules are subject to change as federal guidelines around COVID-19 are put in place. We will stay in touch with you about any changes over the summer. If you have questions about orientation or traveling to Walla Walla, please contact International Student and Scholar Services by emailing leckige@whitman.edu, calling 509-527-5005 or go to whitman.edu/international-services.



Greg Lecki

Associate Director, Intercultural Center for International Student Support Services



Juli Dunn

Senior Associate Dean of Students



Dorothy Mukasa

Assistant Director of Orientation

Your To-Do List

ALL THE THINGS YOU'LL GET FROM US, AND WHAT WE NEED FROM YOU, BEFORE CLASSES START

ITEMS YOU WILL RECEIVE FROM WHITMAN COLLEGE

The New Student Orientation schedule will be posted at whitman.edu/orientation as soon as it is available.

LOOK FOR REGULAR EMAILS from Senior Associate Dean of Students Juli Dunn. These will come every Monday until classes begin.

JUNE 15: Descriptions for the First Year Seminar's learning communities will be sent to your email.

JULY: Annual payment invoice from the Business Office arrives in the mail.

AUGUST: Your residence hall room assignment and fall schedule will come to your Whitman email. You will also receive a housing confirmation by mail.

ITEMS YOU MUST COMPLETE FOR WHITMAN COLLEGE

BY JUNE 15

- **COMPLETE** your housing preferences questionnaire in the applicant portal.
- **ACTIVATE** your Whitman email account: whit.mn/acct
- **COMPLETE** the online advising questionnaire: whit.mn/pmaq. To log in to the questionnaire, use the Whitman username/password you get when you activate your email account.
- **ATTEND** one group advising session: whit.mn/new-student-advising

BY JULY 1

- **SUBMIT** your four preferred learning communities for the First Year Seminar. You will receive a form in your Whitman email.
- **ATTEND** optional department advising sessions: whit.mn/new-student-advising

BY JULY 15

- **SEND** your final high school or college transcripts from all previous institutions to the Office of Admission.
- **REQUEST** College Board send AP reports to Whitman (if applicable).
- **REQUEST** International Baccalaureate send IB certificates to Whitman (if applicable).
- **SUBMIT** transfer credit eligibility form online: whit.mn/tcred (if applicable).

- **SUBMIT** your photo for your Whitman ID. Watch your Whitman email for instructions.
- **COMPLETE** the AlcoholEdu online learning module. You will receive a link to the program in your Whitman email in June.
- **COMPLETE** any applicable placement test, such as calculus, chemistry and languages: whit.mn/place
- **MEET WITH** a pre-major advisor virtually to complete your course wish list: whit.mn/new-student-advising
- If you are requesting a Deferred Payment Plan for Fall 2020, select option 2 on the "Invoice for the 2020-2021 School Year" and return to Student Accounts with a \$25 to cover the contract set-up fee. Learn more about payment options and make online payments at whitman.edu/business-office

BY AUG. 15

- **COMPLETE** the sexual assault prevention online learning module. You will receive a link to the program in your Whitman email in July.
- **COMPLETE** your profile in Handshake, our job and internship platform: whit.mn/handshake
- **COMPLETE** your student check-in: whit.mn/checkin (not available until June 15)
- **SEND** your payment for the 2020 fall semester to Student Accounts, along with the "Invoice for the 2020-2021 School Year" (payment option 1).



Activate Your Whitman Accounts

A key step to being a student at Whitman is activating your Whitman account and email. This will ensure you receive timely updates and can access all required forms through the MyWhitman portal.

- Go to whit.mn/acct
- Read through the Acceptable Use Policy.
- Enter your first name, last name and Whitman ID number (also known as your WID#) in the boxes provided. Your ID number was emailed to you in your first Monday emails.
- Write down the username and temporary password. **WARNING:** Once you go past the screen with your username and password, you cannot return to this screen. Please write it down.
- Click the given link to change your initial password.

Your new password must:

- Be at least 8 characters long
- Contain at least one lowercase letter, one uppercase letter, and one number or symbol

Note: No one else can access your password. If you forget it, email helpdesk@whitman.edu to have it reset.

Using Whitmail

Whitman's email system, Whitmail, is run by the Google platform. You can access your email, Google Drive and Google Apps through the Whitmail system.

TO LOG IN:

- Go to whitmail.whitman.edu.
- Log in with the Whitman username and password you set above.

Upload your Student ID Photo

To save time during orientation check-in, students are asked to upload their own photos for their Whitman ID card.

- Watch for instructions in your Whitman email.
- See photo requirements and tips at whitman.edu/student-ids

Need Additional Assistance?

The Whitman College Technology Services (WCTS) Help Desk is open from 8 a.m. to noon and 1 p.m. to 5 p.m. Monday through Friday.

- Call: **509-527-4976**
- Email: helpdesk@whitman.edu
- Go Online: kb.whitman.edu to search our Knowledge Base database
- Get more tech tips for new students at whit.mn/tech-tips



FREE OFFICE 365

All students receive a free copy of Microsoft's Office 365 Suite, including Word, Excel and PowerPoint. Go to portal.office.com and log in with your Whitman email address and password to download your free software.



Your New Home

During your time at Whitman, you'll meet people from diverse backgrounds who will push you to **GROW INTELLECTUALLY AND EMOTIONALLY**. And you'll make **LIFELONG FRIENDS** in the process.

Our residence halls are more than a group of students living together — they are a community. Your hall section is led by a resident assistant (RA), who is a student like you. RAs plan section events and gatherings to ease your transition to college and help connect all the students living in your area. Each hall also has a resident director (your RD), a recent college graduate who also lives in the hall. Finally, in your hall you'll find a student academic advisor (we call them SAs). This fellow student works with your RA to offer additional academic support and to connect you with resources like tutors and study groups.

Meal Plans

Food service at Whitman College is provided by Bon Appetit. You can learn more about our on-campus dining options, view menus and read about our Flex Dollars meal plans at whit.mn/meals.

Housing Assignment Information

Students will receive information about on-campus room assignments in early August. If you haven't filled out your housing questionnaire in the applicant portal, please do so as soon as possible. You can access the form at engage.whitman.edu/account/login. This information is required to complete room assignments.

Look for an email and physical letter with your housing information in August.

You will be assigned a mailbox at the post office in the Reid Campus Center when you arrive, but your mailbox number does not need to be included in your address.

If you need to send boxes to Whitman ahead of your arrival, please ship them using the address shown in the box on the right of this page. Any packages received before opening day will be delivered to your residence hall. Please do not ship items more than two weeks before the beginning of the semester.

Will I Need a Car?

Whitman does not recommend students bring cars to campus.

Most students find they don't need them. Parking is also extremely limited. The good news is that campus is within walking distance to downtown, a grocery store, restaurants and coffee shops. Walla Walla has affordable public transit and is bike- and pedestrian-friendly. The college offers a free bike share program and has an on-campus bike repair shop. There are ride-sharing services in town — to catch a ride from our local airport, for example. And the college coordinates bus services to Seattle and Portland during academic breaks, and the Grape Line Shuttle offers service to the airport in Pasco, Washington. These options also align with Whitman's commitment to sustainability. For more information, visit whitman.edu/transportation.

Your mailing address

Your mailing address while enrolled at Whitman is:

Your Name
Whitman College
280 Boyer Ave.
Walla Walla WA 99362 USA



Important Room Details

ARE YOU READY TO MAKE YOUR ROOM YOUR OWN? Review the lists below for more information about what we provide in each residence hall, things you'll need (or want!) to bring yourself and some tips about what to leave at home.

Things we provide

- Bed, with extra-long twin mattress (80 inches). Beds in Prentiss Hall are standard twin size.
- Mattress cover
- Desk and chair
- Wardrobe with storage/shelving
- Chest of drawers
- Window blinds
- Bulletin board
- Telephone with voicemail (available upon request)

Things to bring

- Cloth facial coverings (masks)
- Bedding (pillows, extra-long twin sheets, blankets, bedspread)
- Towels and toiletries, including a hand towel for the bathroom
- Clothes and hangers
- Study lamp. A lamp is provided in Jewett Hall.
- Wastebasket
- Laundry basket and detergent
- Small room fan

Things you may want

- Alarm clock
- Power adapters and converters for your electronics
- Dishes, silverware, mugs
- Disinfectant wipes
- Hand sanitizer
- Flame-retardant decorations
- A mini fridge: Refrigerators are available for rent for \$75 a year. To reserve one, fill out the form at whit.mn/fridge.

Things not to bring

- Halogen lamps
- 2.4 or 5.8 GHz cordless phones
- Weapons, including firearms
- Pets (fish are OK)
- Furniture, such as a bed or desk
- Double-sided sticky tape or squares
- Full-size appliances. All section lounges have kitchenettes.

We highly recommend you have a computer and a few related items for your Whitman education. For more specific equipment recommendations or if you need assistance, go to whit.mn/tech-tips

Take a video tour of each residence hall

Learn about their furnishings and watch video tours.
whitman.edu/residence-life/halls

Questions?



509-527-5297



on_campus_housing@whitman.edu



Get Involved

We know that students who are **ENGAGED OUTSIDE THE CLASSROOM** are more likely to succeed and thrive in college. At Whitman, opportunities to connect with your fellow students and the community are endless.

When you join one of our student clubs, sports, organizations or participate in a community internship, you'll meet other Whitties, develop leadership skills, expand your interests, explore new ideas and give back to the community. These activities also give you skills you need to be successful after graduation. You can see a list of existing clubs at whitman.presence.io.

BE BRAVE! Try something new that sounds interesting. You never know where you will discover a new passion or opportunity to learn and grow.

At Whitman, you'll find endless ways to get involved, including interest clubs, club sports, community service programs, Greek Life and student-led publications and radio shows.



Meet Your Campus Support Team

While you're a student at Whitman, you'll have a team of faculty, staff and students who are dedicated to your success. You'll meet the members of your support team during orientation events. These individuals are here to help you get settled in your residence hall, provide additional academic, social and emotional support, provide career and internship opportunities, and so much more. They'll get to know you, your goals and dreams, and help you achieve them. We encourage you to meet with the members of your support team often to make the most of your time at Whitman and the resources available to you.



Intercultural Center

The Intercultural Center can assist you with issues related to your immigration or visa status, internships, employment, status changes, reporting requirements, international travel, income taxes, health insurance and much more. It also runs many events to help you become integrated in the Whitman and Walla Walla community. Learn more at whitman.edu/intercultural-center.

Academic Resource Center

The Academic Resource Center (ARC) is available to help you succeed academically. ARC assists students who need accommodations and provides academic coaching. The ARC is also home to the student academic advisors (SAs) and peer tutors.

Disability Support Services

Whitman College is committed to making our campus, classes and activities accessible to all students, including those with physical, medical, learning and psychological disabilities.

If you need accommodations — whether in academics, residence life or around campus — please contact Antonia Keithahn, keithaam@whitman.edu or **509-527-5767**, prior to arriving on campus. This helps us provide the best service to all students and ensures you have what you need to be successful. Learn more at whit.mn/dss.

Monday Emails for New Students

From early June until the beginning of the semester, you'll receive an email each Monday from Senior Associate Dean of Students Juli Dunn. These emails will share updates about orientation and registration, **IMPORTANT THINGS TO KNOW** about life as a student at Whitman, and other relevant details and deadlines.

You can also find important information, schedules and forms, and answers to frequently asked questions at whitman.edu/orientation.

Activate your account

Please activate your Whitman email account right away so that you don't miss any important updates. Plan on checking your Whitman email weekly throughout the summer.



Welty Student Health and Counseling Centers

The college recognizes mental and physical health as essential to student learning. Good health, in all respects, is a determining factor in the academic success of students attending college. The Welty Student Health and Counseling Centers, conveniently located on campus at the intersection of Boyer Avenue and Merriam Street, offer primary health care and counseling services.

While housed in the same area, the services that each area offers, as well as staff and hours of operations, are different.

Welty Student Health Center

The center is staffed by registered nurses. Medical providers are on site each weekday for medical evaluation and treatment.

In order for us to provide the most effective health service, please complete the Welty Student Health Form online at whit.mn/checkin by Aug. 15, 2020.

Required Immunizations — The college requires all students to provide evidence of two doses of Mumps, Measles and Rubella (MMR) after your first birthday. Other vaccine dates are appreciated but not required. Failure to provide immunization records will result in you being unable to register for fall semester classes.

Tuberculosis Screening — Students who answer yes to any of these questions will be required to have an additional tuberculosis screening. This blood test is conducted at the Welty Student Health Center during orientation activities.

- Have you ever had a positive tuberculosis skin or blood test?
- Were you born in or had frequent prolonged visits to any of these continents: Central America, South America, Africa, Eastern Europe, Asia?
- Have you been vaccinated with BCG vaccine? This is a tuberculosis vaccine given routinely in countries outside the United States.
- Have you been a resident, volunteer or health care worker serving clients with increased risk of tuberculosis?

Health and Accident Insurance

Health and accident insurance is important for all Whitman College students. It is the college's expectation that students have personal health insurance. If you are an international student, the college will provide a plan for you and charge it to your student account. If you have insurance questions, contact health center Director



Welty Student Health Center

Address 11 Merriam St.
Walla Walla, WA 99362

Phone 509-527-5281
509-527-5295

Fax 509-527-4999

Web whitman.edu/health-center

Claudia Ness at **509-527-5040** or International Student Advisor Greg Lecki at **509-527-5001**.

The health center is open to all degree-seeking students regardless of type of health insurance.

Medical Records and Confidentiality

Your medical record is not part of the college academic records system; it remains in the health center and is strictly confidential. No medical information can be released without written permission of the student, who may designate what information is to be given and to whom it is to be directed.

Exceptions to the confidentiality rule will be made only in case of a court order, reportable communicable diseases or results of a criminal offense.

Parents may contact the health center with questions and concerns. However, in compliance with the federal Health Insurance Portability and Accountability Act (HIPAA), we are unable to release information regarding their student's health records or health status unless the student has signed a release of information form specifically allowing their parents to have access to their health status or records.

Health Center Services

- Nursing care with licensed staff
- Physician available for examination and consultation daily
- Gynecological services
- Simple lab tests (such as strep tests, urinalysis, mono, etc.) available on-site
- Blood draws, which are sent to facilities off-site for lab test results

- Routine immunizations, including flu shots
- Medical equipment for loan, such as crutches
- Transportation, as needed, to health appointments in the community
- Physical examinations required by outside organizations (overseas study, Peace Corps, etc.)
- Student employment
- Health care education, counseling and consultation
- Internet access in student lounge and all patient rooms
- Travel health consult and immunizations available
- Testing for sexually transmitted disease

For Your Safety and Security

The Welty Student Health Center doors are locked from 6 p.m. to 6 a.m. Access to services can be obtained with a student ID card. Visiting hours are from 9 a.m. to 11 p.m. and are at the discretion of the nurse on duty.

Counseling Center

The staff of the Whitman College Counseling Center makes every effort to be sensitive to your needs and assist you in addressing the concerns that you share. We are staffed by licensed mental health practitioners who will work with you to decide on the best approach for you and how often you will meet.

Counseling Center Services

We offer a variety of services free of charge, including individual, group and consultation meetings. One of our mental health practitioners will talk with you about your concerns and use their education and training along with the information that you share to determine how to best help you. Some students will become clients of the Counseling Center, while others may be referred to a group or mental health practitioner off-campus.

Confidentiality

The Whitman College mental health practitioners ensure confidentiality in keeping with ethical standards and legal requirements of the state of Washington (RCW 70.02.050). The information that you share with us will be treated as private and confidential. Your information can be shared with others if/when you give written consent/permission through a Release of Information Form. Also, the mental health practitioners will share

necessary confidential information in the following situations without your authorization:

- When there is a reasonable belief that there is a threat to the health and/or safety of you or others
- For essential government functions and judicial/law enforcement proceedings
- For assistance to public health activities

All Whitman mental health practitioners are mandated reporters in the state of Washington. By law, they are required to disclose certain confidential information, including suspected abuse or neglect of children, suspected abuse and neglect of vulnerable adults (RCW 26.44.03) or as otherwise required by law.

Counseling Center

Address 11 Merriam St.

Walla Walla, WA 99362

Phone 509-527-5195

Fax 509-527-4999

Web whitman.edu/counseling-center



Advising and Registration Process

In preparation for fall registration, you'll meet virtually one-on-one with your pre-major academic advisor to select classes and talk about requirements. Staff from the Registrar's Office and the Dean of Students Office also are available to assist with registration.

Group Advising Session — First-year students will attend a virtual group advising session with Senior Associate Dean of Students Juli Dunn to discuss advising, distribution requirements, registration and expectations around academic integrity. Group advising is required for all first-year and transfer students. The sessions will run between June 2-13. Sign up for a session at whit.mn/new-student-advising

Department Advising — All incoming students can sign up for optional advising appointments with individual departments. Go to whit.mn/new-student-advising for information.

First Year Seminars — You will receive information about the required First Year Seminars and descriptions of the different learning communities by June 15. You will need to submit your four preferred learning communities by July 1. You will learn which course you have been assigned to when you receive your schedule from the Registrar's Office.

Pre-Major Academic Advisor — First-year students will schedule a video appointment to meet with an academic advisor between June 29-July 15. Pre-major advising is required for all new students. Your pre-major academic advisor will help you create your course wish list. Find an appointment time at whit.mn/new-student-advising

Class Registration — The Registrar's Office will use your wish list to create your final course schedule, including adding a section of the First Year Seminars. You will receive your schedule on Aug. 1, and will be able to make changes during the first week of classes.

TRANSFER STUDENTS will receive an email to schedule their registration appointment after their credits have been transferred to Whitman. Senior Associate Dean of Students Juli Dunn will conduct the advising and registration for transfer students over the phone in mid-July.

Have questions?

The Registrar's Office and Senior Associate Dean of Students Juli Dunn are available over the summer to provide answers to your questions about registration, course selection and advising.

Registrar's Office

Phone 509-527-5983
 Fax 509-522-4431
 Email registrar@whitman.edu
 Web whitman.edu/registrar

Dean of Students Office

Phone 509-527-5158
 Email dunnjl@whitman.edu
 Web whitman.edu/advising



General Academic Information

We believe a liberal arts education meets two important objectives: preparation for intelligent living and preparation for a successful career. Regardless of your major, your Whitman education will help you develop the ability to think critically and analyze complex issues.

How you plan your academic coursework while at Whitman supports those objectives. We have multiple resources available to help you be successful:

Whitman College Catalog — The catalog is the primary source of information about current courses, general college policies, and requirements for graduation, majors and special programs. You can download the current catalog at catalog.whitman.edu.

Search for Classes — After you have activated your Whitman email account, log in to MyWhitman to use the Course Search tool. It will help you plan your schedule and see what classes are being offered. You can create a wish list of classes by clicking the addition symbol (+) to the left of the class and saving your changes. This can aid you in finding the courses you are interested in when it is time to register, but it does not guarantee you a space in the class.

Pre-Major Advising — As an incoming student, you will be assigned a pre-major advisor who will help you plan your academic coursework. You will have a pre-major advisor until you declare a major, usually spring semester of your sophomore year. After that, you will select an advisor from your major department.

Student Academic Advisors — Student academic advisors (SAs) live in residence halls with first-year students. SAs are specially trained returning students who are available to help you select courses, navigate the catalog and answer questions you may have about classes. They will be able to help you with paper writing and can assist in arranging free tutoring assistance if you are having trouble with your coursework or if you need to improve your time management or study skills.

Pre-Health, Pre-Law and Pre-Education Advising — Whitman College offers specialized advising for students interested in going into the health, law or education fields. These advisors can help you plan coursework and select a major that will assist you in your long-term goals. Visit the Careers, Professions and the Liberal Arts section of the academics website, whitman.edu/academics, for more information.

First Year Seminars

The First Year Seminars — Exploring Complex Questions (GENS 175) and Making Powerful Arguments (GENS 176) — combine a fall course that emphasizes interdisciplinary exploration and intellectual risk-taking with a spring seminar that features in-depth investigation of a focused topic. Both seminars will help you improve the reading, writing and discussion skills you will rely on throughout your time at Whitman. Course descriptions for fall seminars will be sent to you over the summer, when we will ask you to indicate your interests. You will then be automatically registered for one of your preferred courses.

Transfer students with fewer than 58 credits will take GENS 175 but may receive equivalent credit for GENS 176 for a comparable course taken at another institution.

Advanced Placement and International Baccalaureate Credit

For Fall 2020, Whitman College will continue to give credit or equivalency for College Board Advanced Placement Exams. For detailed information, refer to the “Academics” section of the online catalog. You may receive up to 30 credits for combined Advanced Placement (AP) and International Baccalaureate (IB) exam scores. If you wish to take a course at Whitman for which you received AP credit, contact the Registrar’s Office.

If you believe you are eligible for AP or IB credit, request an official report of your scores or examinations be sent directly from the College Board or International Baccalaureate Program to Whitman College as soon as they are available.

General Certificate of Education (GCE) Advanced Level Examinations

Credit may be awarded for select General Certificate of Education (GCE) Advanced Level examinations (Cambridge A-Levels) pending review of each exam syllabus. Students interested in pursuing such credit should contact the Registrar’s Office.

Transfer Credit

All transfer credit is evaluated on a course-by-course basis. Transfer credit includes courses taken at any college



or university. If you have completed or are planning to complete any college coursework prior to starting classes at Whitman, you must request that the institution attended send an official transcript of all your previous college or university coursework directly to the Whitman Registrar's Office as soon as possible. You will also need to complete and electronically submit a Transfer Credit Eligibility Form, located online at whit.mn/tcred.

After your official transcript(s) is evaluated, you will be given a Transfer Equivalency Report. Learn more at whitman.edu/registrar.

Running Start and Financial Aid

Students who participated in Running Start and wish to transfer credits to Whitman College may see an impact in the number of semesters they are eligible for their full financial aid award. There are two options available for Running Start students.

OPTION 1 — Transfer all Running Start coursework accepted by Whitman. You will qualify for available financial aid consistent with the class-level determined by the total number of credits transferred to Whitman. See “Classification of Students” in the “Academics” section in the online catalog.

OPTION 2 — Transfer no more than 14 dual-enrollment semester-equivalent credits accepted by Whitman. You will be considered a first-year student for purposes of financial aid.

Students with Running Start credit will be provided a Running Start Options Selection Form and must declare Option 1 or 2 during initial registration. For more information, contact the Office of Financial Aid at finaid@whitman.edu or **509-527-5178**.



Placement Tests

Students interested in taking calculus, chemistry and foreign language courses are advised to take a placement exam in order to register for the correct course. These tests are available online and should be taken by July 15. Access the exams at whit.mn/place.

Chemistry

The Chemistry Department has three tracks of introductory chemistry; which track you pursue depends on your interest and the other courses you have taken in the subject. Track 1 is for students who are considering a major outside of the sciences, and Tracks 2 and 3 are for students who are considering a major in biology, biochemistry, biophysics and molecular biology (BBMB), chemistry, geology or pursuing a health career. The chemistry placement test is required for all students interested in either Track 2 or 3. One semester of an introductory course with lab from either Track 2 or 3 is recommended for students considering a geology major. If you have any questions, contact Associate Professor Nate Boland at bolandne@whitman.edu or 509-527-5906, or Associate Professor Tim Machonkin at machonte@whitman.edu or 509-527-5799.

AP AND IB CREDIT— If you received a score of 4 or 5 on the AP Chemistry exam or a score of 5, 6 or 7 on the IB Chemistry exam, you will receive three credits of general chemistry (CHEM 125) after Whitman College receives your exam report. Students cannot earn credit toward the CHEM 135 lab. All students, even those with AP or IB chemistry credit, are required to complete the chemistry placement test.

TRACK 1— These introductory courses, intended for students not majoring in the sciences, fulfill the science and the quantitative analysis distribution requirement. They introduce chemistry concepts in the context of applied disciplines. You may take either course for credit, but not both.

- **CHEM 100**— Introduction to Environmental Chemistry
- **CHEM 102**— The Chemistry of Art

TRACK 2— Introductory courses review foundational knowledge covered in a typical high school chemistry course but in more depth and introduce advanced concepts required for students majoring in a science discipline.

- **CHEM 111**— Problem-Solving in Chemistry. This class is a co-requisite for CHEM 125, depending on your placement score.
- **CHEM 125 and 126**— General Chemistry I and II
- **CHEM 135 and 136**— General Chemistry Lab I and II

TRACK 3— Advanced general chemistry with lab (CHEM 140) is an accelerated one-semester course that covers introductory general chemistry concepts in greater detail and at a faster pace while building on the background material learned in high school. This course also introduces advanced topics that are not covered in our regular general chemistry sequence in Track 2.

- **CHEM 140**— Advanced General Chemistry Lecture and Lab

Calculus

Students interested in taking college-level calculus are encouraged to take the calculus placement exam. You can access the exam at whit.mn/place. Most calculus exams given at Whitman limit the use of calculators, so your placement exam will be most accurate if you do not use a calculator.

MATH 125 – Calculus I – This is the appropriate course for students who have never taken calculus and are interested in a major that requires one or more calculus courses. It is important that the student have a good background in precalculus skills as very little review of prerequisite material is provided.

MATH 126 – Calculus II – Most students who earned a 4 or 5 on the Calculus AB exam are successful in this course. You will earn three credits on your transcript from your AP exam. Some of the topics in Math 126 on integration will be familiar, but most of the material on sequences and series will be new.

MATH 225 – Calculus III – If you earned a 4 or 5 on the Calculus BC exam, you should enroll in this course. You will earn six credits on your transcript from your AP exam. Students who earned a 4 or 5 on the Calculus AB exam can take the placement exam to see if they are ready for MATH 225. If you start in MATH 225, you will receive only three credits on your transcript from the AP exam. However, successful completion of MATH 225 means that you do not need to have credit for MATH 126 on your transcript.

The results of your placement test are not binding. You may choose to enroll in a lower-level calculus course if you do not feel prepared for Calculus II or Calculus III,

but then you will not be awarded the corresponding AP credit on your transcript. You must submit such a decision to the Whitman Registrar's Office via your Whitman email account.

If you are unsure which course is the best choice for you after taking the placement exam, contact mathematics department chair Russ Gordon at gordon@whitman.edu or chat with any member of the department during registration. If after the first week or so of classes, you decide that a different level of calculus is better suited for you, then you should not have trouble changing sections during the standard add/drop period.

Foreign Languages

Whitman College offers courses in Arabic (first year only), Chinese, French, German, Classical Greek, Japanese, Latin and Spanish, with majors in Chinese, Classics and Classical Studies, French and Francophone Studies, German Studies, Hispanic Studies, and South Asian and Middle Eastern Studies, as well as minors in each of these areas.

Students who have studied French, German, Japanese or Spanish must take a placement test before enrolling in a course in that language. It is not necessary to take the placement test if you are beginning a foreign language you have not previously studied. Activate your Whitman account and then go to whit.mn/place to access the online assessment. Students who need to take the Japanese placement exam should contact Associate Professor Yuki Shigeto at shigety@whitman.edu.

Students interested in studying Chinese or Classics (Greek or Latin) can review language requirements for these courses at whit.mn/place. There is no separate evaluation.

If you have questions or need assistance selecting the correct language course, contact:

Chinese	Associate Professor Donghui He	hed@whitman.edu	509-527-5891
Japanese	Associate Professor Yuki Shigeto	shigety@whitman.edu	509-527-5785
Classics	Associate Professor Kate Shea	sheakj@whitman.edu	509-527-5894
French	Professor Nicole Simek	simeknj@whitman.edu	509-527-5054
German	Assistant Professor Emily Jones	jonesee@whitman.edu	509-527-5756
Hispanic Studies	Associate Professor Nico Parmley	parmlenm@whitman.edu	509-527-5055



Writing Assessments

A key component of a Whitman education is being able to articulate complex ideas in writing. You've been admitted to Whitman, so we recognize that you're already a skilled writer.

The college supports the continued development of your writing skills through our Department of Rhetoric, Writing and Public Discourse. All new students will participate in a writing exercise online prior to the semester beginning. You will receive information about how to take your assessment in your Whitman email. You will be given a prompt and a set amount of time to write a response. Our writing faculty will evaluate the papers to identify students who would benefit from additional writing assistance.

If you need to enroll in Rhetoric, Writing and Public Discourse 170, the Registrar's Office will add it to your schedule. RWPD 170 is structured to serve the needs of entering and advanced students. This class helps Whitman students strengthen their skills in order to best be successful in academics at Whitman. Students who place out of RWPD 170 will need to identify an additional course or courses for their registration wish list.

Center fOr Writing and Speaking

The Center fOr Writing and Speaking (or COWS) offers

support for all students at Whitman College. COWS offers trained student tutors, writing workshops and one-on-one consultations on writing and speaking. COWS is available to help you along every step of the writing process — from brainstorming to polishing. You can find COWS in Olin Hall, Room 191. Drop in or make an appointment. Learn more at whitman.edu/cows.

The college supports writing in a variety of ways. The student academic advisors (SAs) living in the first-year residence hall sections are trained to support developing writers. Some courses across the college employ writing fellows who support instruction in writing, and the Department of Rhetoric, Writing and Public Discourse offers coursework at all levels.

Assessment Accommodations

If you need accommodations for the writing assessment, please contact Antonia Keithahn in the Academic Resource Center as soon as possible. Email keithaam@whitman.edu or call 509-527-5767.

Fall 2020 Academic Calendar

International students arrive	AUGUST 15-16
International Student Orientation	AUGUST 17-19
Move-In Day for domestic students	AUGUST 20
New Student Orientation begins	AUGUST 21
Fall semester classes begin	AUGUST 24
Final examination period	NOVEMBER 22-25
Winter break begins	NOVEMBER 26



Whitman College Contact Information

Academic Resource Center.....	509-527-5213
Admission.....	509-527-5176
Athletics.....	509-527-5921
Bookstore.....	509-527-5274
Counseling Center.....	509-527-5195
Dean of the Faculty.....	509-527-5397
Dean of Students.....	509-527-5158
Financial Aid.....	509-527-5178
Health Center.....	509-527-5281
Intercultural Center.....	509-527-5596
Orientation.....	509-527-5208
Outdoor Program.....	509-527-5965
Penrose Library.....	509-527-5191
Post Office.....	509-527-5903
President's Office.....	509-527-5132
Registrar.....	509-527-5983
Reid Campus Center.....	509-527-5200
Residence Life.....	509-527-5297
Security.....	509-527-5777
Student Accounts.....	509-527-5143
Student Engagement Center.....	509-527-5183
Technology Services.....	509-527-4976

Whitman College has a strong commitment to the principle of nondiscrimination. In its admission and employment practices, administration of education policies, scholarship and loan programs, and athletic and other school-administered programs, Whitman College does not discriminate on the basis of race, color, sex, gender, religion, age, marital status, national origin, physical disability, veteran's status, sexual orientation, gender identity, or any other basis prohibited by applicable federal, state or local laws.

