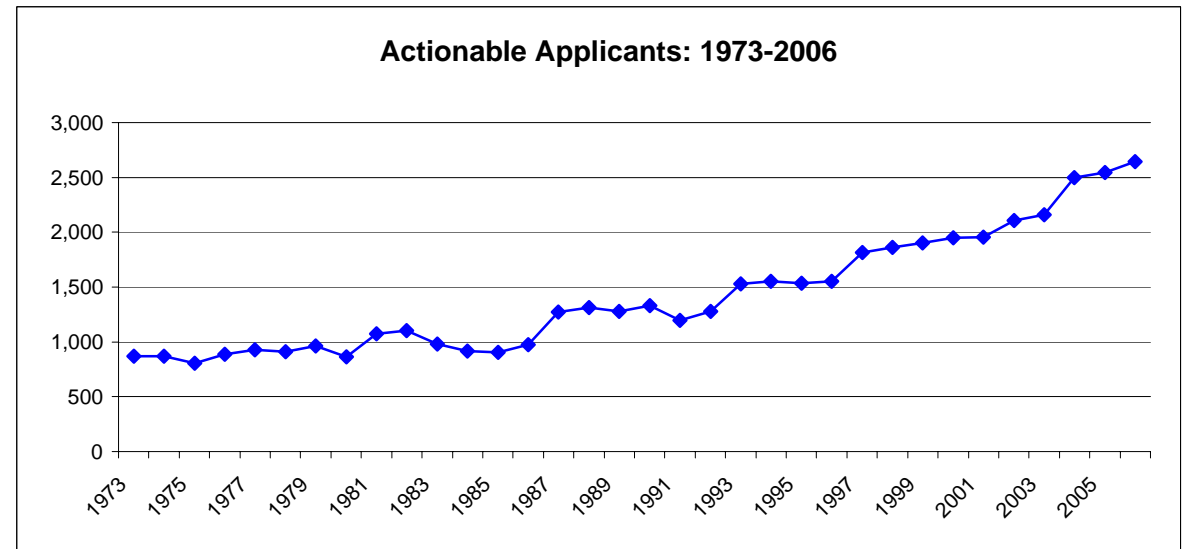
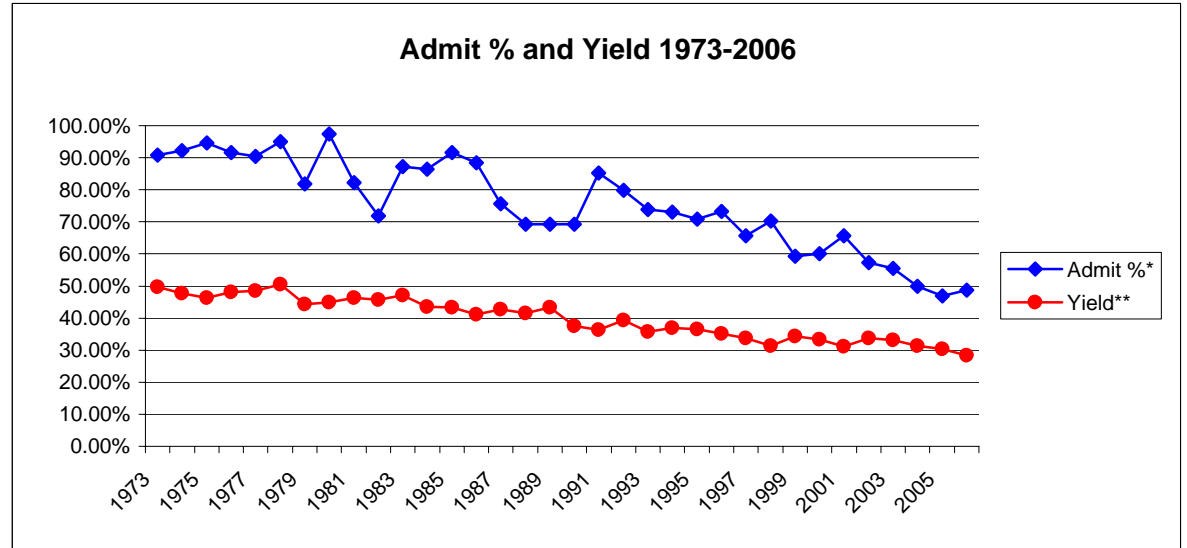


Undergraduate Admissions Statistics 1973-2006

Year	Actionable Applicants	Offers of Admission	Enrolled	Admit %*	Yield**
1973	872	792	394	90.83%	49.75%
1974	867	800	381	92.27%	47.63%
1975	805	761	352	94.53%	46.25%
1976	885	811	390	91.64%	48.09%
1977	929	840	407	90.42%	48.45%
1978	912	867	438	95.07%	50.52%
1979	965	789	349	81.76%	44.23%
1980	866	843	378	97.34%	44.84%
1981	1,074	884	410	82.31%	46.38%
1982	1,102	792	362	71.87%	45.71%
1983	982	856	403	87.17%	47.08%
1984	918	794	345	86.49%	43.45%
1985	904	829	359	91.70%	43.31%
1986	973	861	354	88.49%	41.11%
1987	1,274	965	412	75.75%	42.69%
1988	1,313	909	378	69.23%	41.58%
1989	1,279	885	383	69.19%	43.28%
1990	1,333	923	346	69.24%	37.49%
1991	1,199	1,021	370	85.15%	36.24%
1992	1,277	1,020	401	79.87%	39.31%
1993	1,527	1,129	403	73.94%	35.70%
1994	1,551	1,133	418	73.05%	36.89%
1995	1,535	1,087	398	70.81%	36.61%
1996	1,551	1,135	398	73.18%	35.07%
1997	1,817	1,192	402	65.60%	33.72%
1998	1,864	1,309	409	70.23%	31.25%
1999	1,900	1,126	386	59.26%	34.28%
2000	1,948	1,169	389	60.01%	33.28%
2001	1,954	1,283	400	65.66%	31.18%
2002	2,107	1,207	408	57.29%	33.80%
2003	2,159	1,196	397	55.40%	33.19%
2004	2,497	1,246	390	49.90%	31.30%
2005	2,544	1,193	361	46.89%	30.26%
2006	2,646	1,291	366	48.79%	28.35%



Source: Admission Office May/September Report and HEDS Admissions Survey

* Admit % is the percentage of applicants admitted.

** Yield is the percentage of admitted students who enroll.