

---

## OUTDOOR ARTISTRY &

# *sculpture*

*New artworks and landscaping  
inspire contemplation*



*Moongate*



*Angkor IV*

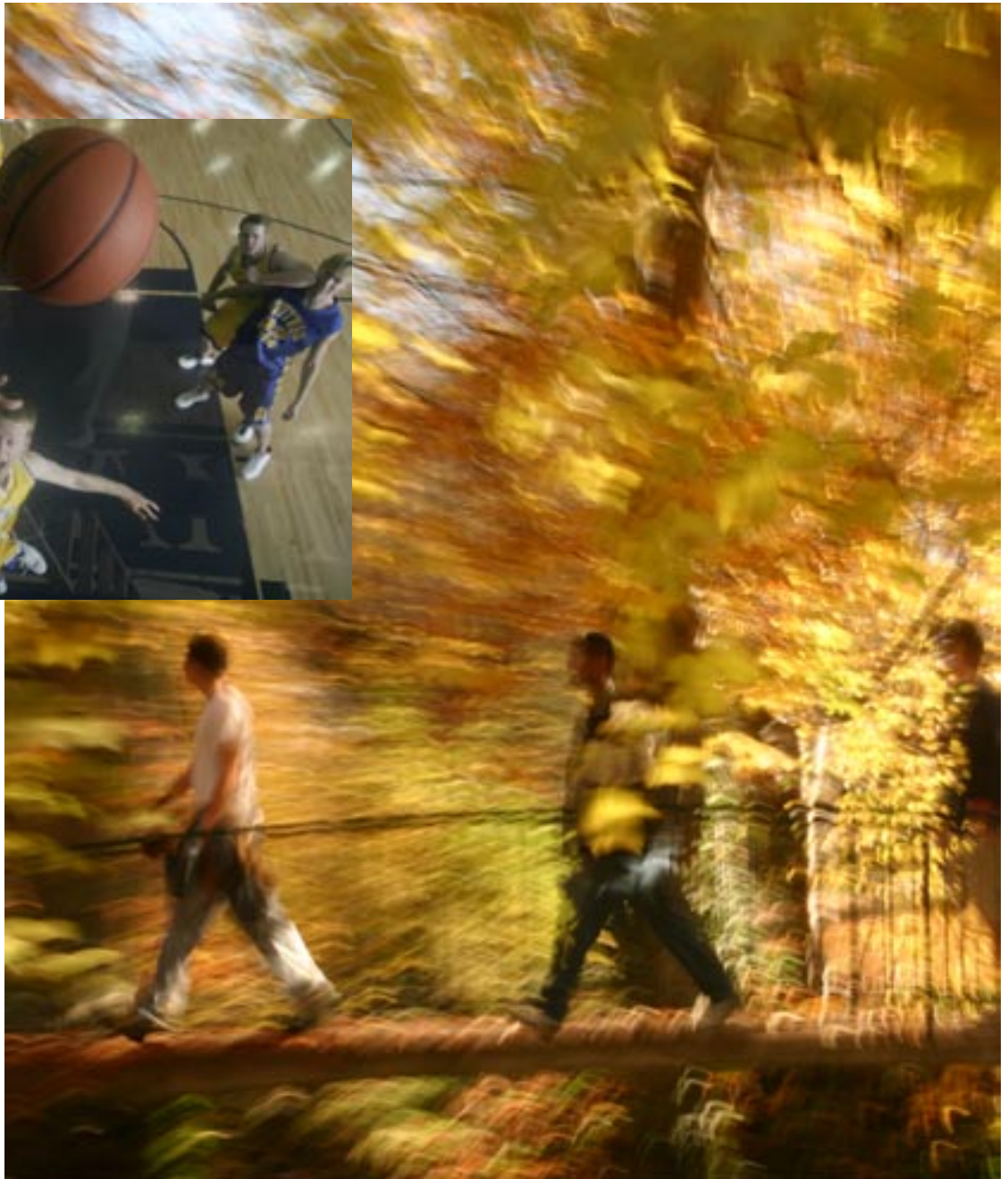
A basalt archway in “Narnia,” the College Creek glen near Penrose House, is one several new campus features. The arch is part of landscaping intended to create a meditation grove in the glen, a gift of the class of 2002. It was designed by Thomas Berger of Seattle, Whitman’s landscape architect.

*Moongate*, installed near Lyman House, is one of two recent additions to Whitman’s growing collection of outdoor sculpture. *Moongate* was created by California

artist Benbow Bullock, who donated it to the College.

*Angkor IV*, situated near Hunter Conservatory, is a gift of the class of 1961. It was created by Lee Kelly of Oregon City, Oregon, who was inspired by temples he visited in Cambodia.

Not only the Whitman community but also the campus ducks have found new delight in Lakum Duckum — a fountain installed in November that dances with an ever-changing cascade of water.



Matt Zimmerman, '04

*As the campus explodes with fall colors even in late November, students, above, cross a bridge near Prentiss Hall. Top left, basketball captain Mike Peterson flies to the hoop during an early season warm-up practice. Right, in downtown Kunming, Whitties in the Summer Studies in China program meet up with Anne Cartwright, '03, who taught at Yunnan University last year: from left: Nathan Shiu, Oliver White, Alicia Ng, Cartwright, Patricia Hayward, and Erica Meurk.*

